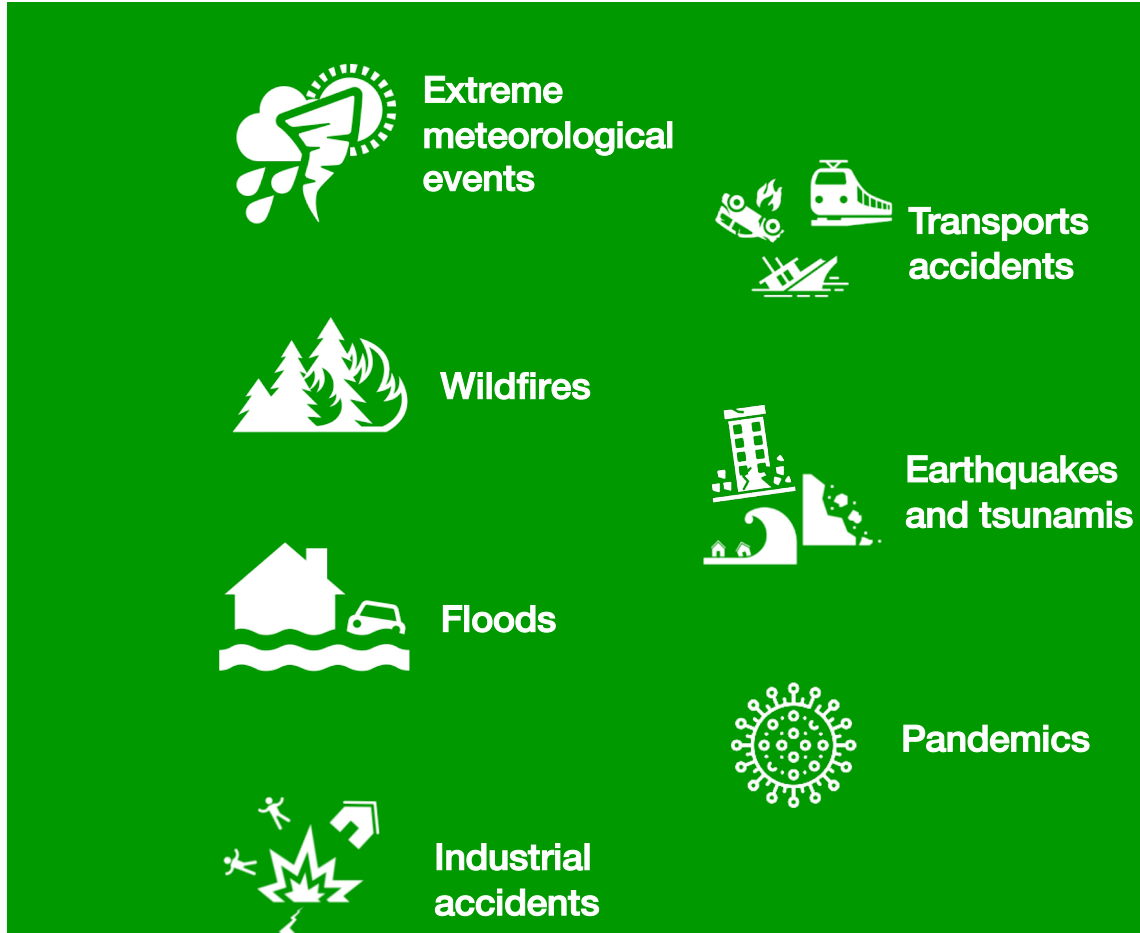




PORTUGUESE CIVIL PROTECTION SYSTEM

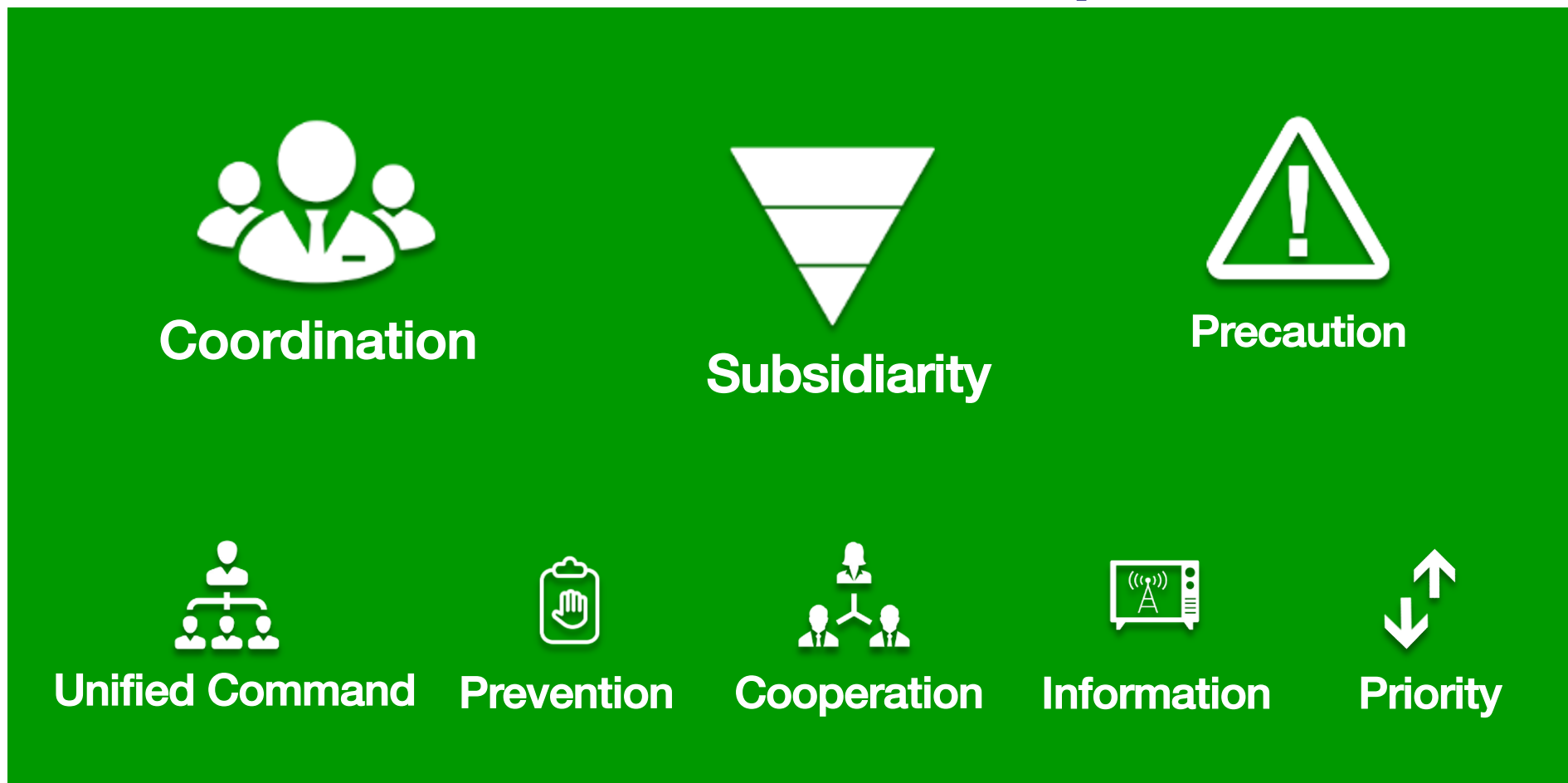
Portugal...



- Extreme meteorological events**
- Wildfires**
- Floods**
- Industrial accidents**
- Transports accidents**
- Earthquakes and tsunamis**
- Pandemics**



CP Base Law - Fundamental Principles



CP STRUCTURE



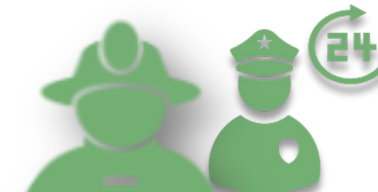
PRIME MINISTER



PARLIAMENT



OPERATIONAL COORDINATION CENTERS
National \ Regional \ Sub-regional
(NON-PERMANENTS)



OPERATIONAL COMMANDS
1 National \ 5 Regional \ 24 Sub-regional



TOWN MAYOR



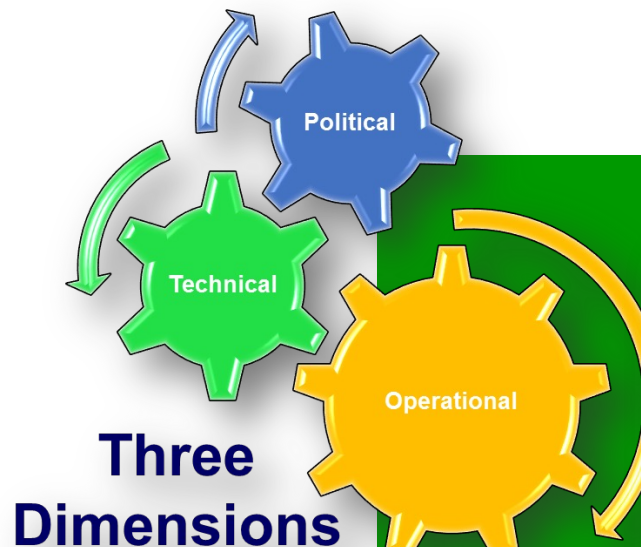
MUNICIPAL CIVIL PROTECTION SERVICES
428 Municipal Services

POLITICAL COORDINATION PILAR

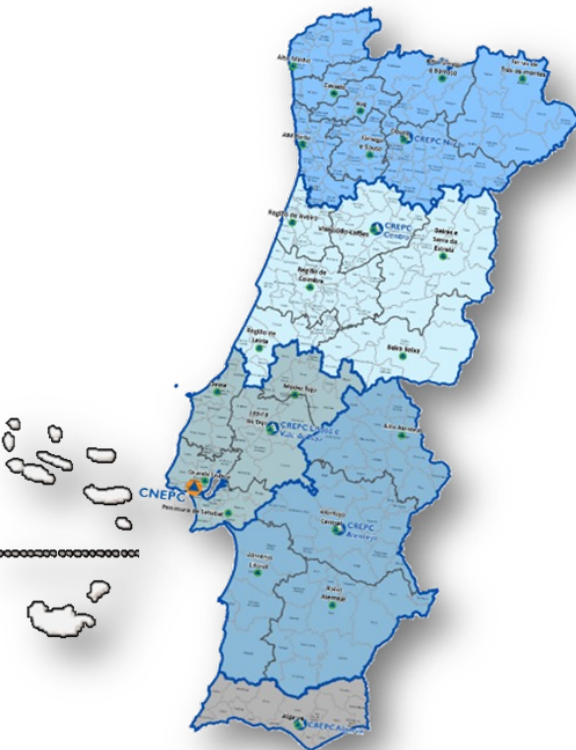
INSTITUTIONAL COORDINATION PILAR

OPERATIONAL COMMAND PILAR

CP OBJECTIVES



- ✓ Prevent collective risks and the occurrence of major accidents or disasters
- ✓ Mitigate collective risks and limit their effects
- ✓ Rescue and relief – people, property, environment
- ✓ Support the restoration of the normal life in affected areas



- **National Level (ANEPC)**
 - ✓ 1 National Command
- **Regional Level (ANEPC)**
 - ✓ 5 Regional Commands
 - ✓ 24 Subregional Commands
- **Local Level (Municipalities)**
 - ✓ 278 Municipal CP Services
- **Autonomous Regions (Azores/Madeira)**

Civil Protection Agents



Firefighters



Security Forces



Medical Institute and Health Services



Armed Forces



Maritime and Aeronautics Authorities



Forest Services



Own statute, functions of civil protection in the fields of intervention, support, relief and health and social assistance.



NATIONAL AUTHORITY FOR EMERGENCIES AND CIVIL PROTECTION

What we do?

- Plan, coordinate and develop the Civil Protection policy, namely in the fields of prevention and response to major accidents and disasters;
- Oversight of firefighters' activities;
- Planning and coordination of national needs in terms of civil emergency planning to deal with situations of crisis or war.

Preparation and prevention actions

Relief operations activity

Firefighters superintendence

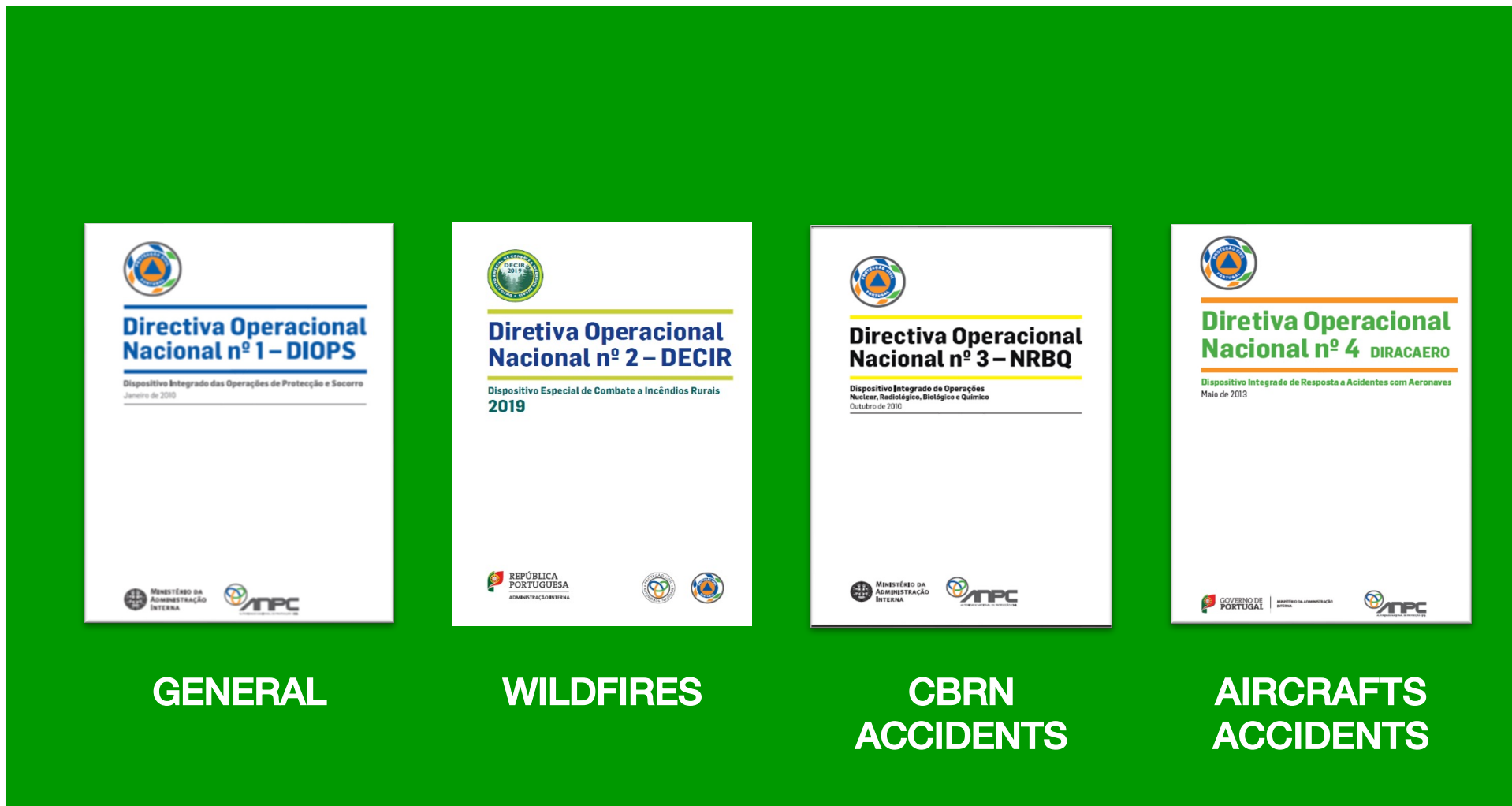
Civil Protection Special Force

International cooperation



EU Civil Protection Mechanism

PLANNING AND PROCEDURES



Directiva Operacional Nacional nº 1 – DIOPS
Dispositivo Integrado das Operações de Protecção e Socorro
Janeiro de 2010

Diretiva Operacional Nacional nº 2 – DECIR
Dispositivo Especial de Combate a Incêndios Rurais 2019

Directiva Operacional Nacional nº 3 – NRBQ
Dispositivo Integrado de Operações Nuclear, Radiológica, Biológica e Química
Outubro de 2010

Diretiva Operacional Nacional nº 4 DIRACAERO
Dispositivo Integrado de Resposta a Acidentes com Aeronaves
Maio de 2013

GENERAL

WILDFIRES

CBRN ACCIDENTS

AIRCRAFTS ACCIDENTS

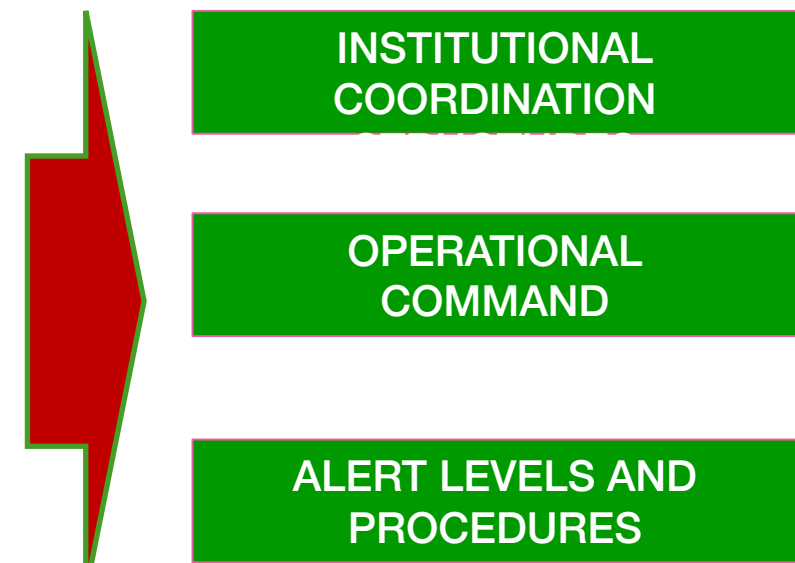


SIOPS

Integrated System for Rescue and Relief Operations

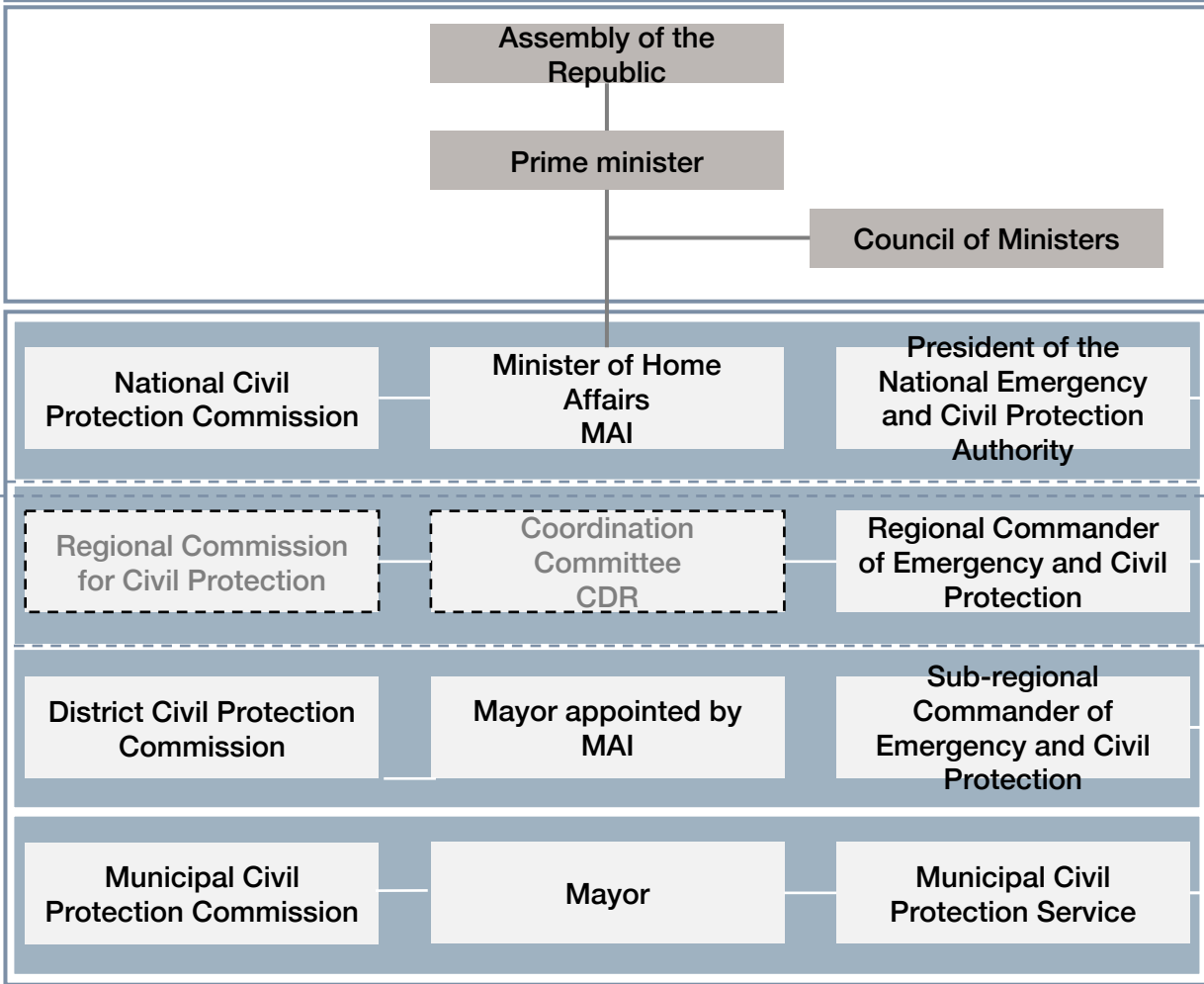
Set of structures, standards and procedures that ensure that all civil protection agents act, at the operational level, in a coordinated way and under a single command, without prejudice to their hierarchical

Aims at responding to emergency situations: declared or foreseen.



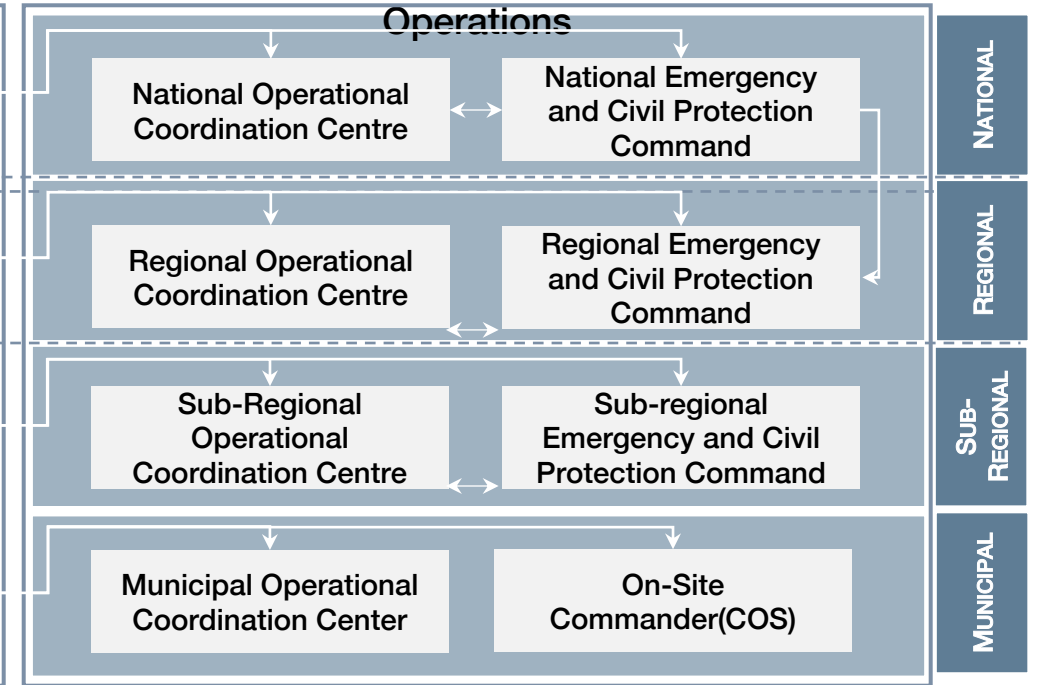
Political organization

Management, Coordination and Execution Structures



Operational Organization

Integrated System of Protection and Rescue



Political Coordination

Political direction

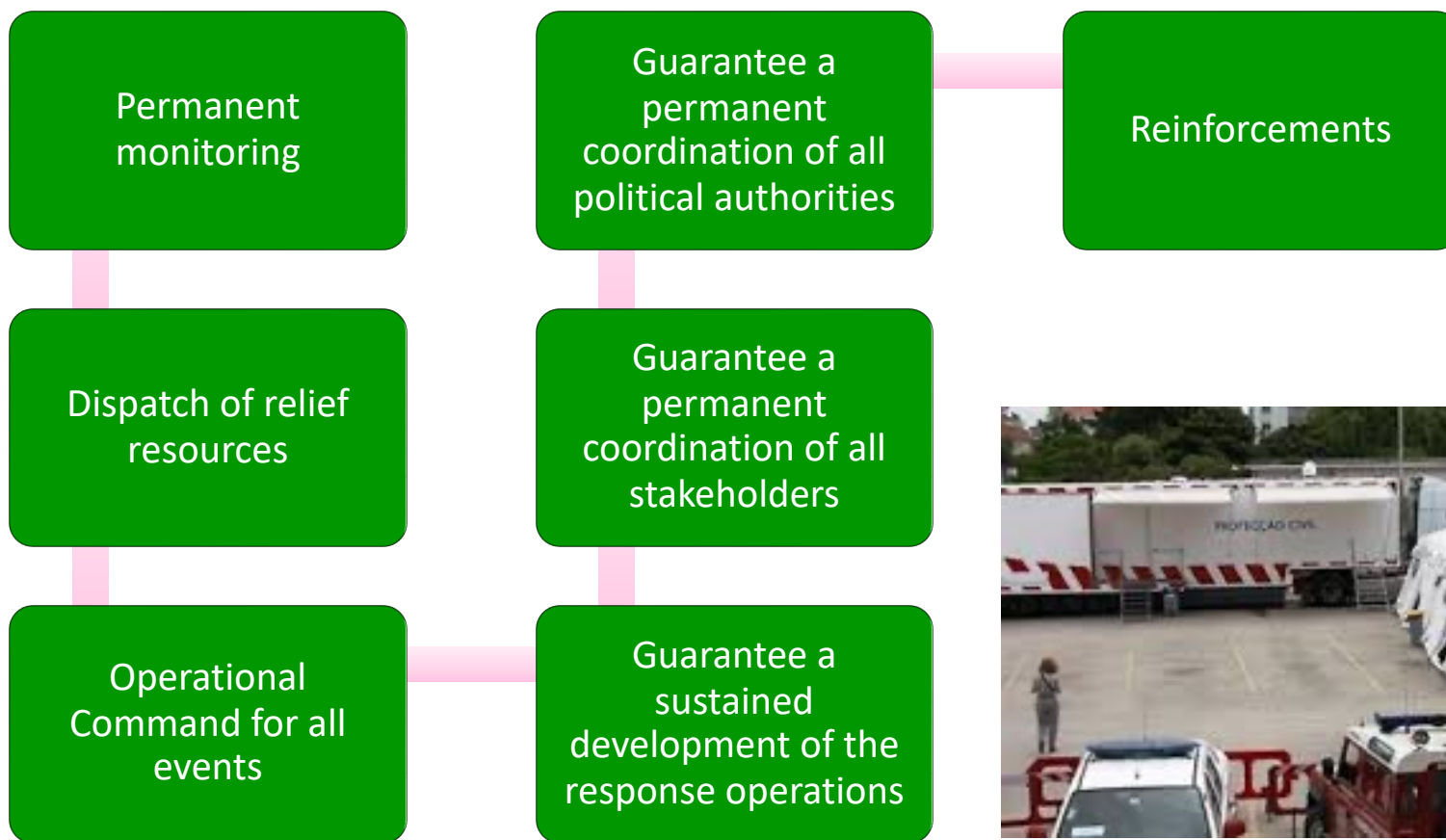
Supports

Institutional Coordination

Operational Coordination

SIOPS - PERMANENT OBJECTIVES

Integrated System for Rescue and Relief Operations



Special Readiness Status

The determination of the EPE is the **responsibility of the CCON**, which is responsible for informing the Regional and subregional of the need of activation of local assets, depending on the phenomenon, its estimated severity, duration and level of readiness considered appropriate.

NORMAL READINESS

Routine capacity implemented and monitoring.
Situations that do not determine the State of Special Alert

Monitorização

SPECIAL STATE OF READINESS

Reinforcement of monitoring and increase in the degree of readiness of the Forces that integrate each capacity

CCON

I

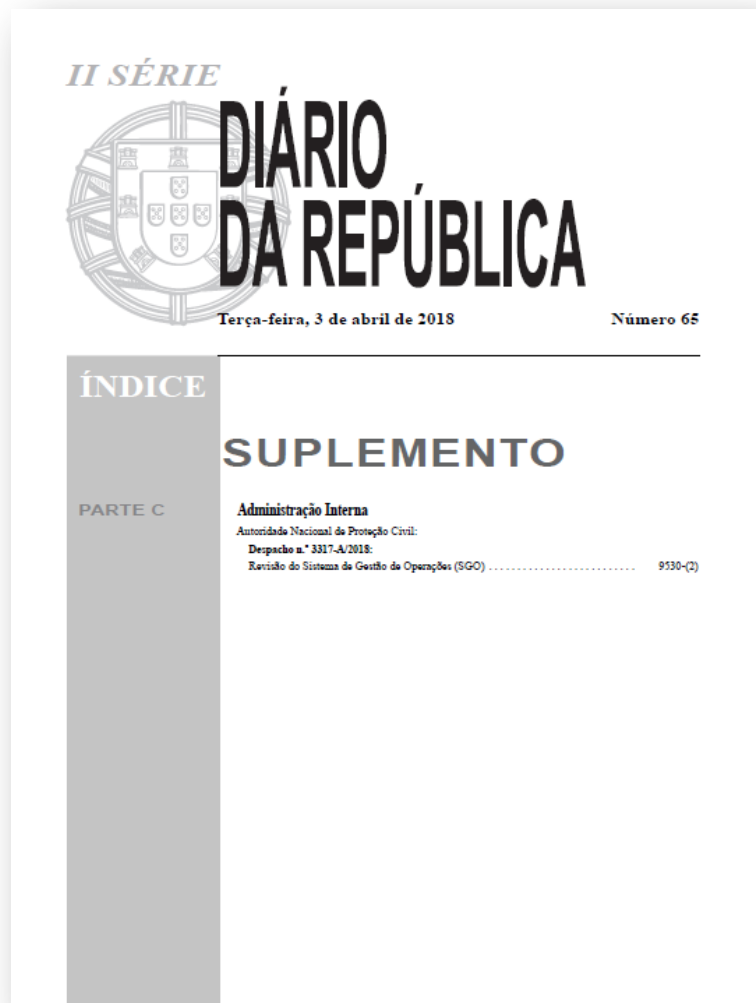
II

III

IV

INCIDENT COMMAND SYSTEM

Legislation n.º 3317-A/2018



It applies to all CP Entities and institutions with a special duty of cooperation when engaged in protection and relief operations.

Form of operational organization that develops in a modular and evolutionary configuration according to the importance and type of event.

The operations management system is configured at the **strategic, tactical and maneuver levels.**



At the **strategic level**, the management of operations is ensured, which includes:

- Determining the appropriate strategy;
- The preparation and updating of the strategic action plan;
- Forecasting and planning of results;
- The setting of specific objectives for the tactical level.



At the **tactical level**, operational activities are directed taking into account the established strategy and the guidelines defined for the level of maneuver.



At the **maneuver level**, specific tasks are determined and executed, carried out with the available human and material resources, according to the defined objectives.

INCIDENT COMMAND SYSTEM



IC

- Safety Officer
- Liaison Officer
- CP Coordinator (Level IV)

Coordinates the CP and 3 Cells



AUTORIDADE NACIONAL DE PROTEÇÃO CIVIL
COMANDO NACIONAL DE OPERAÇÕES DE SOCORRO / 2015

ДЕ ОБЪЯВЉЕЊЕ ДЕ ЗОСОБРО \ 2012
СОМЪИДО ИНЦИДЕНТ
УПОМОГНОДЕ ИНЦИДЕНТ ДЕ МОДЕЉО СЪИФ

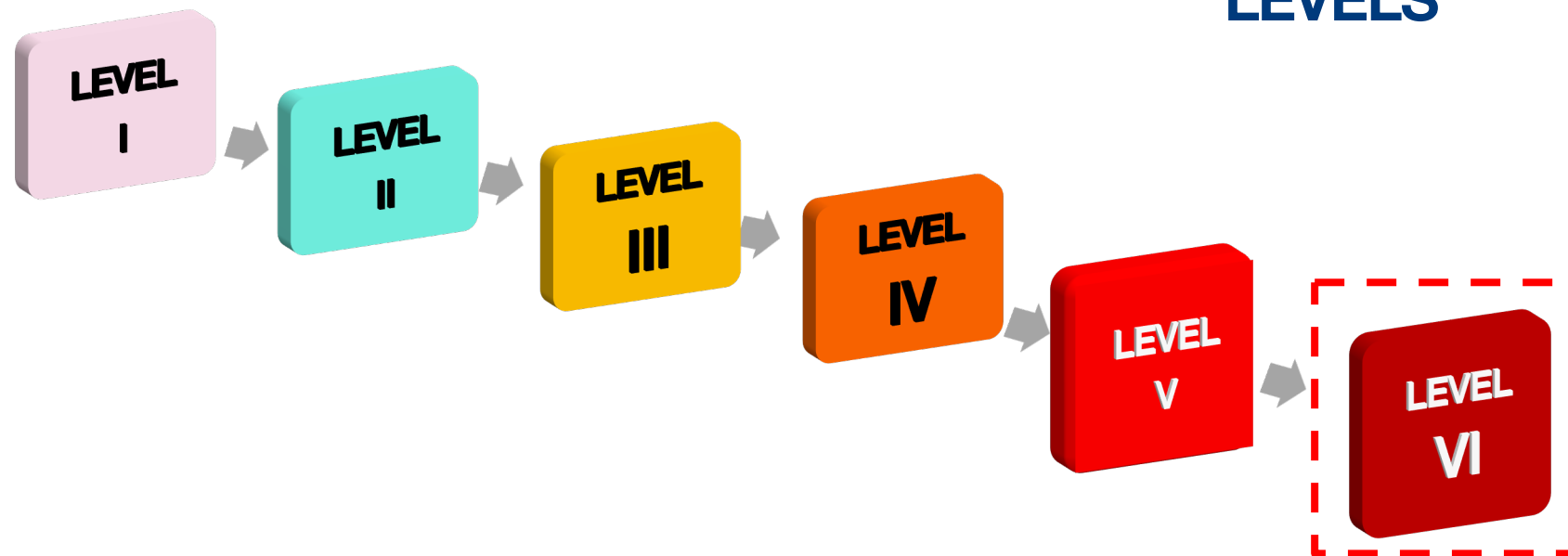


INTEL DIVISION
ANTICIPATION DIVISION
SPECIALIST DIVISION

AERIAL MEANS DIVISION
INTERVENTION SECTORS

RESOURCES DIVISION
COMS AND GIS DIVISION

INCIDENT COMMAND SYSTEM LEVELS



LEVELS	NUMBER OF RESOURCES	INCIDENT ORGANIZATION
LEVEL I	36	N.A
LEVEL II	108	SECTORES (MÁX. 3)
LEVEL III	324	SECTORES (MÁX. 6)
LEVEL IV	648	FRONTS (MÁX. 2 WITH MÁX 6 SECTORES BY FRONT)
LEVEL V	1 944	FRONTS (MÁX. 4 WITH MÁX. 6 SECTORES BY FRONT)
LEVEL VI	NA	ÁREA SECTOR (WITH MÁX 6 SECTORS)

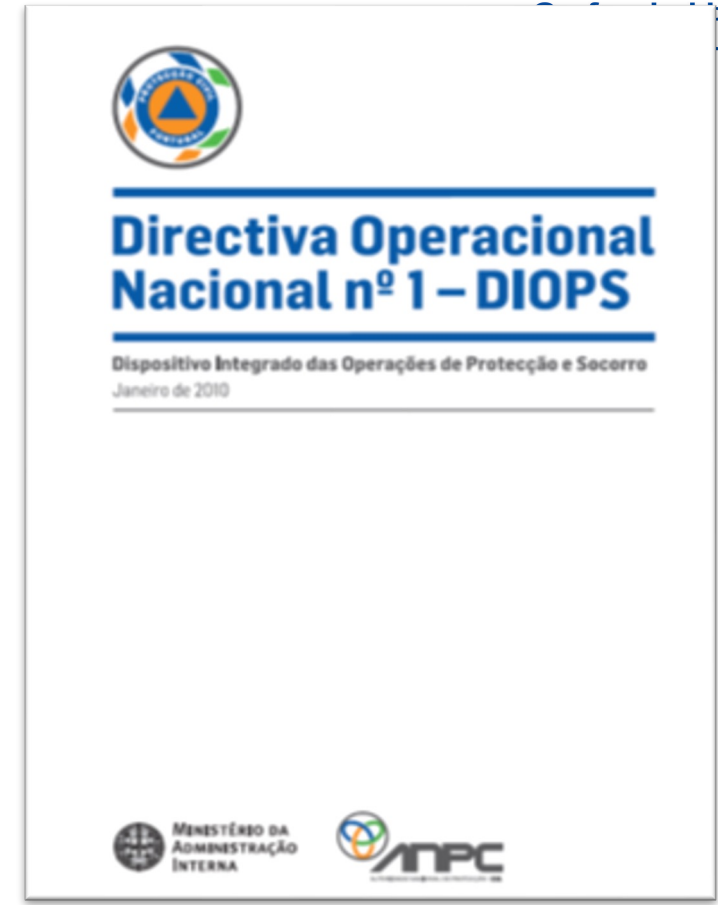
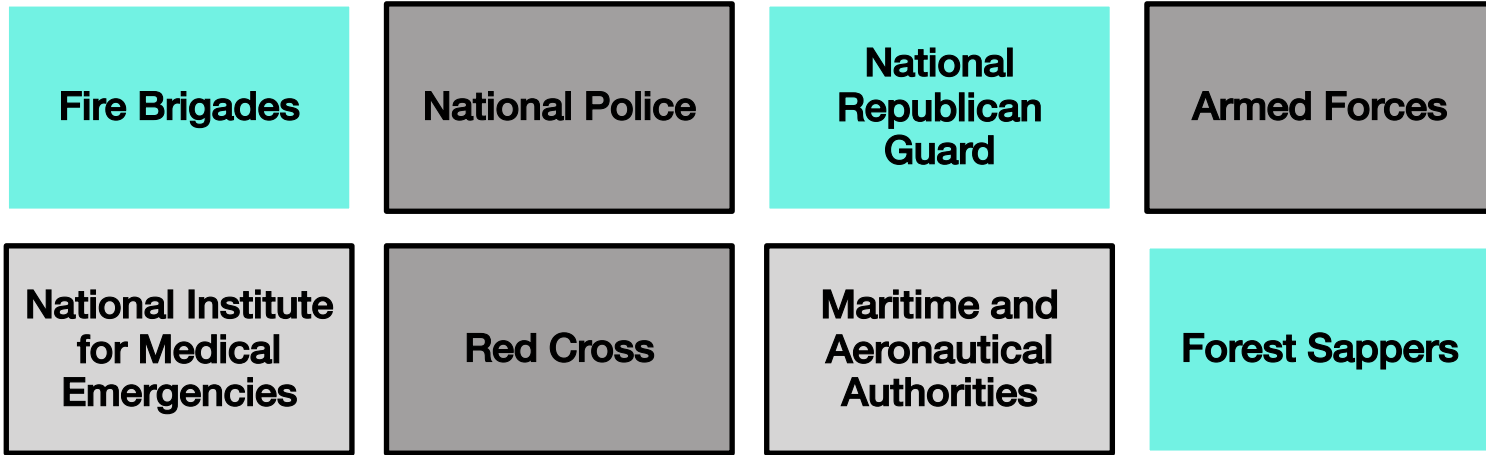
The decision to move the organization to a higher level is the responsibility of the **On Site Commander**.

Coimbra

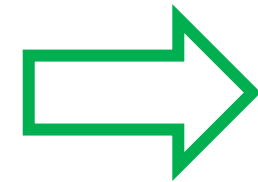
FLOODS RESPONSE 2026



AT THE OPERATIONAL LEVEL, ALL ENTITIES ARE COORDINATED ACT UNDER A SINGLE UNIFIED COMMAND OF THE OPERATION



Set of resources, missions, doctrine and procedure for general civil protection situations



NATIONAL DIRECTIVE

REPÚBLICA PORTUGUESA
GOVERNAMENTO PORTUGUÊS

AUTORIDADE NACIONAL DE EMERGÊNCIA E PROTEÇÃO CIVIL

COMUNICADO TÉCNICO-OPERACIONAL NACIONAL
COMANDO NACIONAL DE EMERGÊNCIA E PROTEÇÃO CIVIL

Informação validada em: 18JUN25 14:30 Nº 036/2025 Número de Páginas: 5

ANEXO I

EPE de SIOPS para o DECIR entre 200000JUN25 a 202359JUN25

Comandos Sub-Regionais	EPE
CNEPC	I
CREPC NORTE	I
CSREPC Alto Minho	N
CSREPC Alto Tâmega e Barroso	I
CSREPC Área Metropolitana do Porto	N
CSREPC Ave	N
CSREPC Cávado	N
CSREPC Douro	I
CSREPC Tâmega e Sousa	N
CSREPC Terras de Trás-os-Montes	I
CREPC CENTRO	I
CSREPC Beira Baixa	I
CSREPC Beiras e Serra da Estrela	I
CSREPC Região de Aveiro	N
CSREPC Região de Coimbra	N
CSREPC Região de Leiria	N
CSREPC Viseu, Dão e Lafões	I
CREPC LISBOA E VALE DO TEJO	I
CSREPC Grande Lisboa	N
CSREPC Lezíria do Tejo	I
CSREPC Médio Tejo	I
CSREPC Oeste	N
CSREPC Península de Setúbal	N
CREPC ALENTEJO	I
CSREPC Alentejo Central	I
CSREPC Alentejo Litoral	N
CSREPC Alto Alentejo	I
CSREPC Baixo Alentejo	I
CREPC ALGARVE	I

Nota: De acordo com Resolução n.º 3/2025 da Comissão Nacional de Proteção Civil, que aprovou a Diretiva Operacional referente ao «Estado de Pronto Intervenção Especial (EPE) para as entidades integrantes do Sistema Integrado de Operações de Proteção e Socorro (SIOPS)», a prontidão e a mobilização associada aos EPE são as indicadas na tabela seguinte:

NÍVEL	PRONTIDÃO (horas)	MOBILIZAÇÃO (%)
EPN	N/A	N/A
EPE I	Imediato	10 %
EPE II	Até 2 horas	25 %
EPE III	Até 6 horas	50 %
EPE IV	Até 12 horas	100 %

Página 5 de 5
Este documento tem carácter: **RESERVADO**

Special Readiness Status

- Based on the Weather forecast and risk analysis
- Decided by the National Operational Coordination Center (CCON)
- Stipulates special procedures and actions to be implemented by all the entities involved in the fire management and response, at Regional and local level
- Increment the capacity response

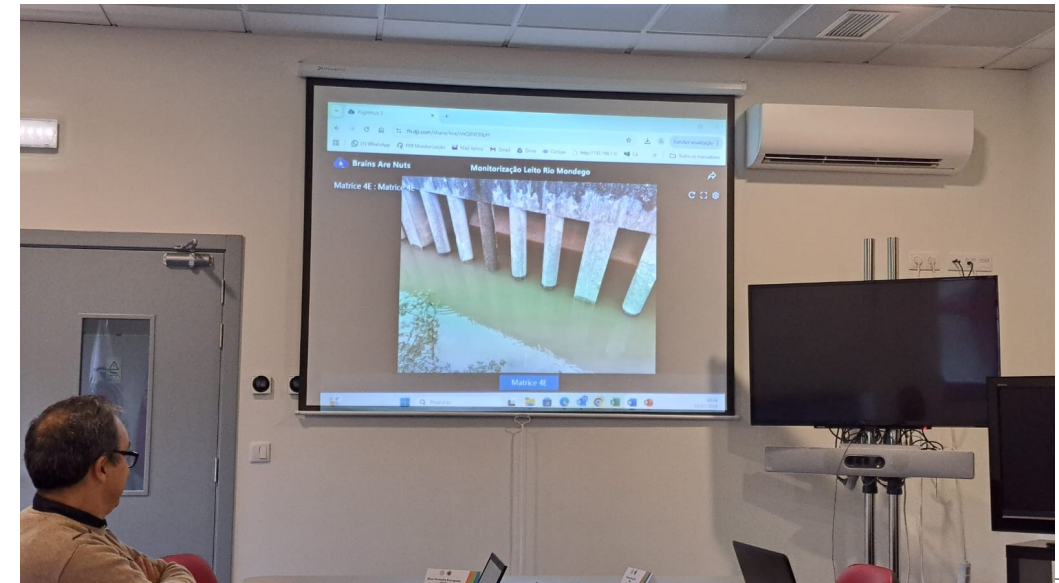
- Warning to the Population – Hydrological Risk, Mondego River and tributaries.
- Warning to the Population - Hydrological Risk and Extreme Wind Event.
- CCOS with the presence of IPMA, extended to the Presidents of the Municipalities, DGEstE, SMPC, Command Elements of the Fire Departments.
- Distribution of STARLINK satellite communication equipment from CIM-RC to the Municipalities of the Region of Coimbra and CSREPC.
- Reinforcement the resources from other Subregions
- Reinforcement of Operations Room human resources.
- Activated the district CP Plan of Coimbra.
- Support zone for population
- Evacuation people where it's needed



- CCOS in permanent presence with the presence of the entities: ANEPC, GNR, PSP, CIM-RC, FIREFIGHTERS, E-REDES and ULS-BM.
- Dissemination the updating information.
- Requested the suppression of traffic on the Edgar Cardoso Bridge.
- Issuance of Notice to the Population Risk of Floods.
- 6 boats requested from the Marines.
- Meeting with farmers from Baixo Mondego region.
- Press Conference with District CP Commission President and Mayors of Baixo Mondego
- Aerial REVIEW with H2, verification of the bed of the Ceira and Mondego Rivers, from the village of Cabouco to Ereira. Verification of the spillway areas, A14 and villages affected by the rising water.
- Meeting of the District Civil Protection Commission



- Reconnaissance flight of unmanned aircraft
- CCOS meeting permanently – ANEPC, GNR, PSP, FFAA, CIM-RC, E-REDES, APA, ISS
- Daily meetings with CCOS, Municipalities and Fire Departments
- Meeting with the Secretary of State for Civil Protection, Mayors
- Meeting at APA, presence of the Minister of Environment and Energy, Mayors and subregional commander
- Issuance of Operational Information related to the pre-positioning of means;
- Dissemination of operational information, meteorological and hydrological information to CCOS, Municipalities and Fire Departments;
- Monitoring of hydraulic infrastructures;
- Permanent articulation with the Media;





- Distribution of STARLINK satellite communication equipment from CIM-RC to the Municipalities of the Region of Coimbra and CSREPC.
- CCOS in permanent presence with the entities: ANEPC, GNR, PSP, CIM-RC, FIREFIGHTERS, E-REDES and ULS-BM.
- Requested Municipal POSIT.
- Combat groups requested in the Region of Aveiro and Viseu and Dão Lafões and reinforcement of resources from the Region of Coimbra,
- COSREPC visits Municipalities affected by the storm, together with the President of CIM-RC.
- Aerial REVIEW with H2, verification of the bed of the Ceira and Mondego Rivers.
- Reinforcement the resources from other Subregions



- CCOS meeting permanently – ANEPC, GNR, PSP, FFAA, CIM-RC, E-REDES, APA, ISS
- Daily meetings with CCOS, Municipalities and Fire Departments
- Meeting with the Secretary of State for Civil Protection, Mayors
- Meeting at APA, presence of the Minister of Environment and Energy, Mayors and subregional commander
- Dissemination the updating information.
- Aerial review of the affected locations;
- Permanent articulation with the Media;



- Articulation with the responsible for the population support zone to meet the needs.
- Support the population in a support zone.
- Visit the affected areas.
- Meeting at CCOS with His Excellency the President of the Republic, His Excellency the Prime Minister, His Excellency the Minister of Environment and Energy, Mayors, His Excellency the Secretary of State for Civil Protection, Mr. President ANEPC, Mayors of Baixo Mondego.
- Centralization in the CIM Region of Coimbra, the donations to the affected Municipalities.





3 Persons

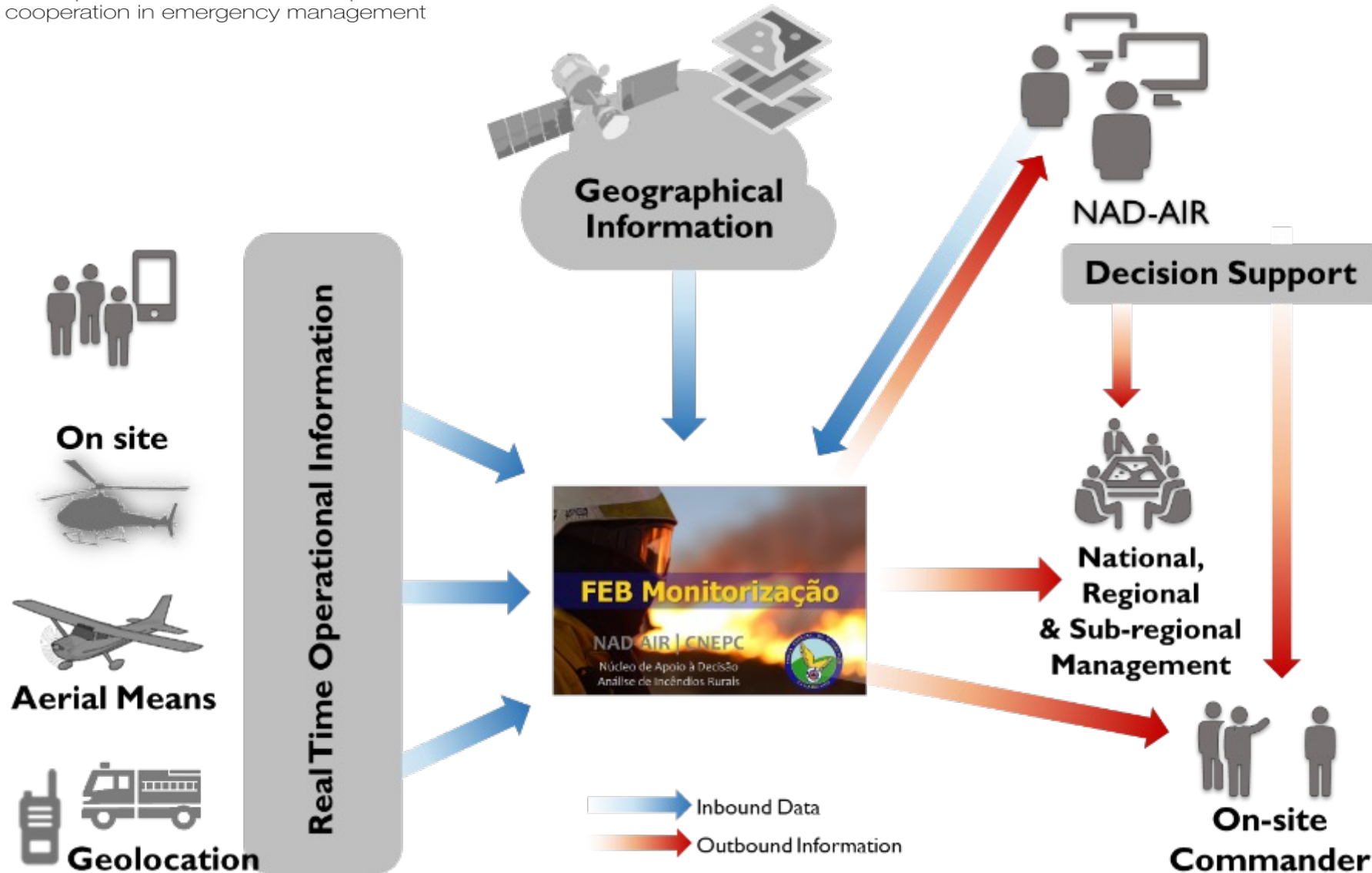
- 1 Technician
- 2 Assistants

Outputs

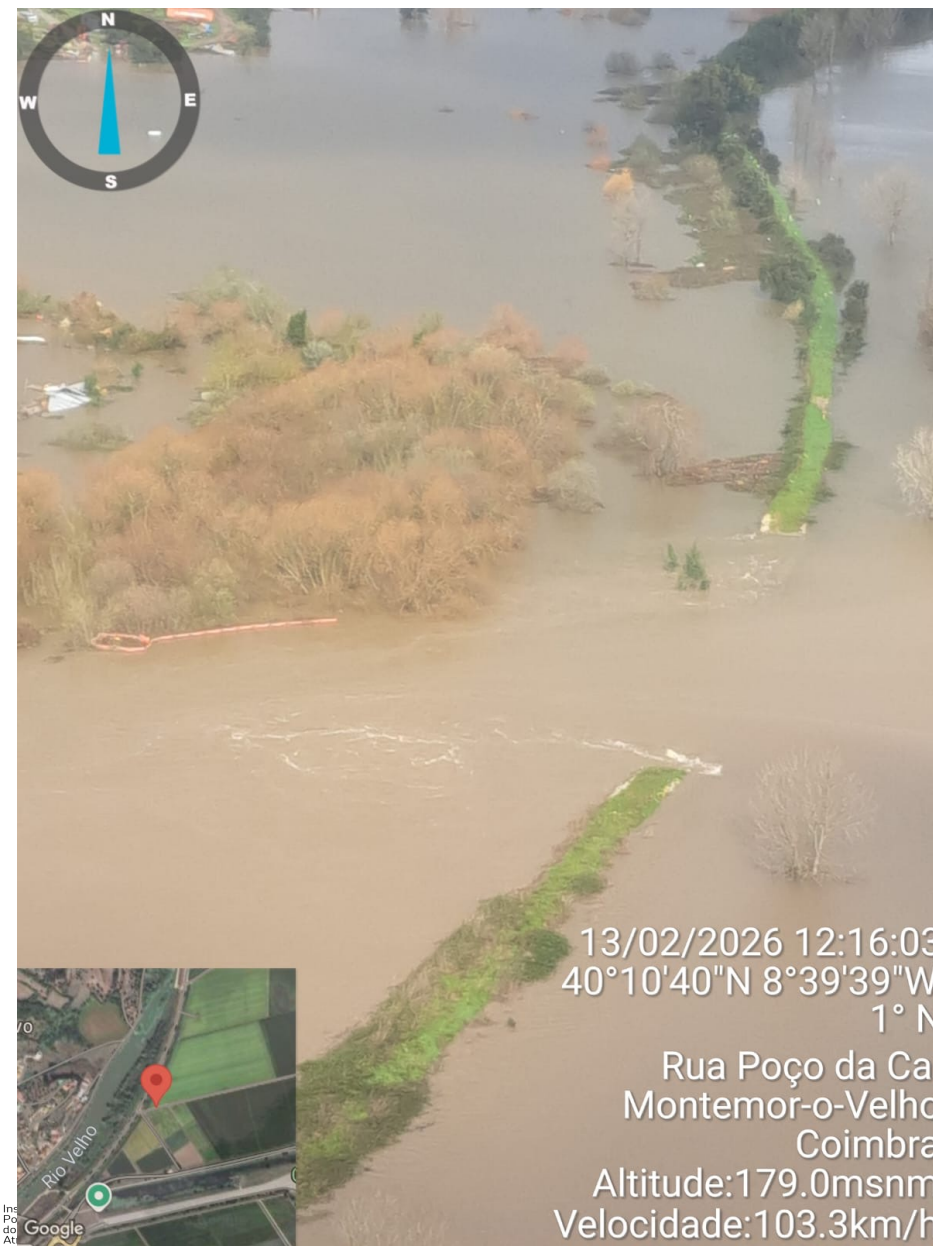
- Daily Briefing with the Nacional Command of Relief Operations
- Strategic Analysis (every 3 Days)
- Operational Information – INFOP

Application and data development

- Thematic GIS layers
- Data base exploration
- ArcGIS PRO / ArcGIS Online




- CCOS meeting permanently – ANEPC, GNR, PSP, FFAA, CIM-RC, E-REDES, APA, ISS
- Daily meetings with CCOS, Municipalities and Fire Departments.
- Meeting with the Secretary of State for Civil Protection, Mayors
- Meeting at APA, presence of the Minister of Environment and Energy, Mayors and subregional commander
- Dissemination the updating information.
- Aerial review of the affected locations;
- Visit the affected areas.
- Permanent articulation with the Media;





DECISION SUPPORT SYSTEMS

SADO - SGOS



SGOS Sistema de Gestão de Operações de Socorro

carlos.mota (Último acesso: 04-05-2023 16:26 | 10.1.27.248 | 2) SAIR

SGOS
SIGM
ESTATÍSTICA
SINOP
ADMIN

OCORRÊNCIAS
MONITORIZAÇÃO
MONITORIZAÇÃO 112
DOSSIERS
GESTÃO DE PPI
SUBSÍDIOS
MEIOS AÉREOS

SGOS > Ocorrências > **Lista de Ocorrências**

MENSAGENS (0 NOVAS)

Não existem resultados a apresentar

[nova](#) [ver todas](#)

ALERTAS 112

Não existem alertas a apresentar

Estado do Serviço: Online
Última verificação: 20:25

[Ver Alertas](#)

SUMÁRIO

Não encerradas: **605**

Meios envolvidos: **641**

Nº de Entidades: **560**

Nº de Operacionais: **1331**

[CRIAR OCORRÊNCIA >](#)

Nº Ocorrência: Natureza: Local: Descrição:

Data Início: Data Fim:

Mais Opções ▼ [Pesquisar](#)

<input type="checkbox"/>	Número	Sub-Região	Estado	Data/Hora	Natur.	Local	Ent. Resp.	Meios	OP
<input type="checkbox"/>	20230522080	[1] Médio Tejo	Em Curso	03/05/2023 08:00	9118	EUROMODEX	CBV Abrantes	63/0/0	149
<input type="checkbox"/>	20230529641	[2] Grande Lisboa	Em Resolução	04/05/2023 18:57	2401	Estrada das Águas L...	CBV Queluz	5/0/0	13
<input checked="" type="checkbox"/>	20230528927	[3] Alto Minho	Em Curso	04/05/2023 16:01	4303	Pavilhão Zé natário	CBM Viana do Castelo	4/0/0	11
<input type="checkbox"/>	20230529519	[4] Lezíria do Tejo	Conclusão	04/05/2023 18:26	3105	Casais Novos	CBM Santarém	3/0/0	9
<input type="checkbox"/>	20230529983	[5] Area M. Porto	Despacho de 1.º Alerta	04/05/2023 19:55	2101	Rua Monsenhor Fon...	RSB Porto	2/0/0	9
<input type="checkbox"/>	20230529846	[6] Península de Setúbal	Em Curso	04/05/2023 19:45	2101	Praceta Dom Miguel I	CBV Barreiro	3/0/0	9
<input type="checkbox"/>	20230529790	[7] Area M. Porto	Chegada ao TO	04/05/2023 19:22	2101	Rua monte grande	CBV Carvalhos	3/0/0	8
<input type="checkbox"/>	20230529940	[8] Ave	Despacho de 1.º Alerta	04/05/2023 20:15	2101	Vila Nova de Famali...	CBV Vila Nova Famalicão	3/0/0	8
<input type="checkbox"/>	20230529865	[9] Oeste	Despacho	04/05/2023 19:47	2403	Estrada nacional 9	CBV Torres Vedras	3/0/0	8
<input type="checkbox"/>	20230529975	[0] Lezíria do Tejo	Despacho de 1.º Alerta	04/05/2023 20:24	4321	Avenida Paulo VI	CBV Rio Maior	2/0/0	7

1 < 1 2 3 4 5 >
 [Apagar](#)
[Exportar KML](#)
[Exportar CSV](#)
[Imprimir](#)

Dossiers de Ocorrências

EAR Amarelo - Região

1700/2023

Terras de Trás-os-

1750/2023

Distrito de Faro

1755/2023

Viseu Dão Lafões

1779/2023

Viseu Dão Lafões

1777/2023

Viseu Dão Lafões

1778/2023

1816/2023

REGIÃO DE COIMBRA

1809/2023

1870/2023

Região Leiria

1835/2023

Região de Leiria

1842/2023

Região de Leiria

1804/2023

Varias Regiões

GLB - CNEPC

Sub-região Tâmega e

TES

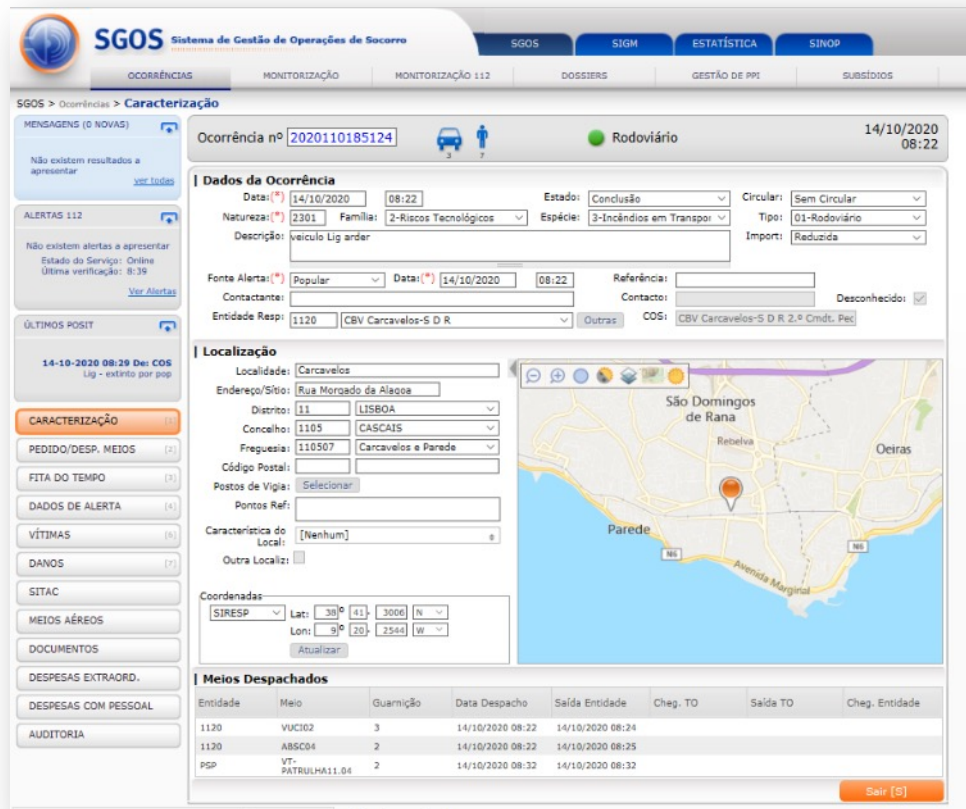
2023 | Todos os direitos reservados

3.0.0.4

SADO - SGOS



Co-funded by the European Union



SGOS Sistema de Gestão de Operações de Socorro

Ocorrência nº: 2020110185124

Dados da Ocorrência

Data: 14/10/2020 08:22 Estado: Conclusão Circular: Sem Circular

Natureza: 2301 Família: 2-Riscos Tecnológicos Espécie: 3-Incêndios em Transp. Tipo: 01-Rodoviário

Descrição: Veículo Lig arder

Fonte Alerta: Popular Data: 14/10/2020 08:22 Referência: Contactante: Contacto: Desconhecido: Entidade Resp: 1120 CBV Carcavelos-S D R Outras: COS: CBV Carcavelos-S D R 2.º Cmt. Pec

Localização

Localidade: Carcavelos

Endereço/Sítio: Rua Morgado da Alcaça

Distrito: LISBOA Concelho: CASCAIS Freguesia: Carcavelos e Parede

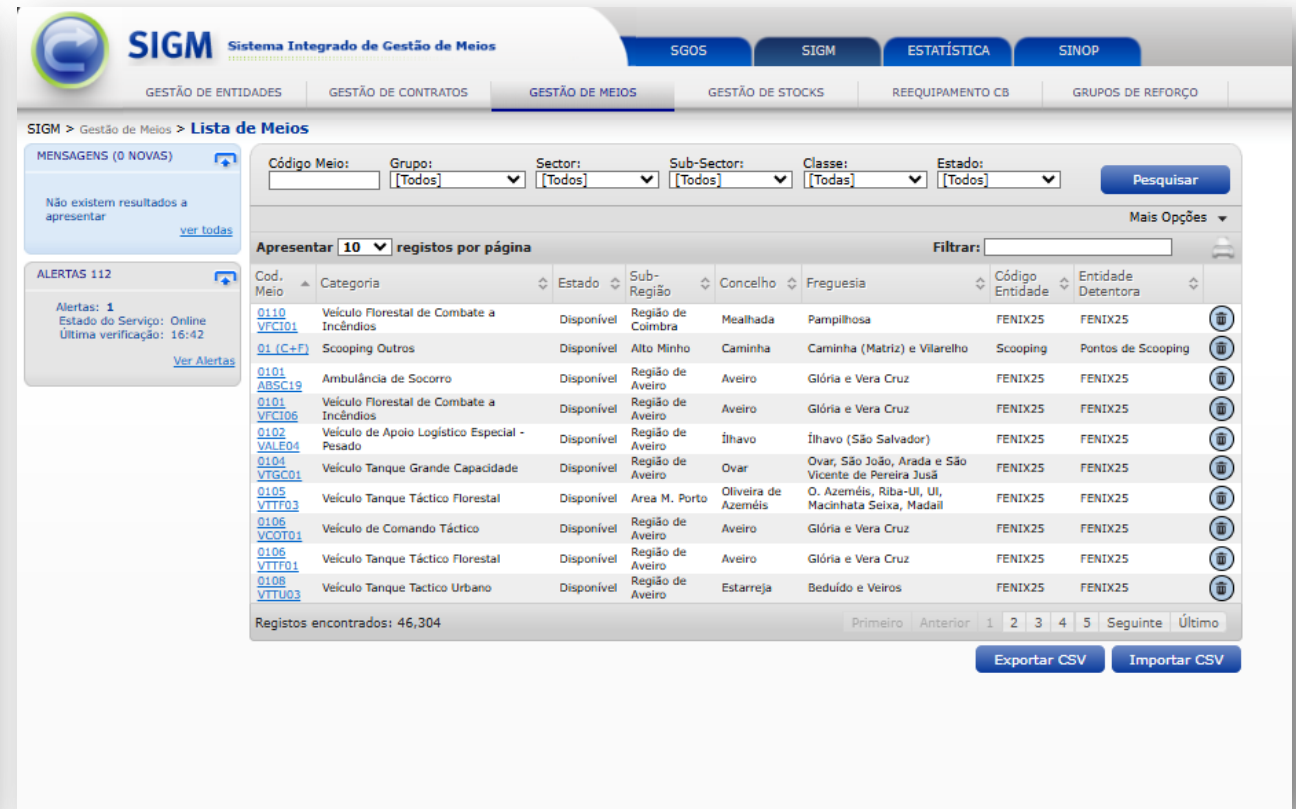
Código Postal: Pontos de Vigia: Selecionar

Característica do Local: [Nenhum]

Coordenadas: SIRESP Lat: 38° 41' 30.06" N Lon: 9° 20' 25.44" W

Meios Despachados

Entidade	Meio	Guarnição	Data Despacho	Saída Entidade	Cheg. TO	Saída TO	Cheg. Entidade
1120	VUCI02	3	14/10/2020 08:22	14/10/2020 08:24			
1120	ABSC04	2	14/10/2020 08:22	14/10/2020 08:25			
PSP	VT-PATRUHLH11.04	2	14/10/2020 08:32	14/10/2020 08:32			



SIGM Sistema Integrado de Gestão de Meios

Gestão de Meios > Lista de Meios

MENSAGENS (0 NOVAS)

ALERTAS 112

Alertas: 1 Estado do Serviço: Online Última verificação: 16:42

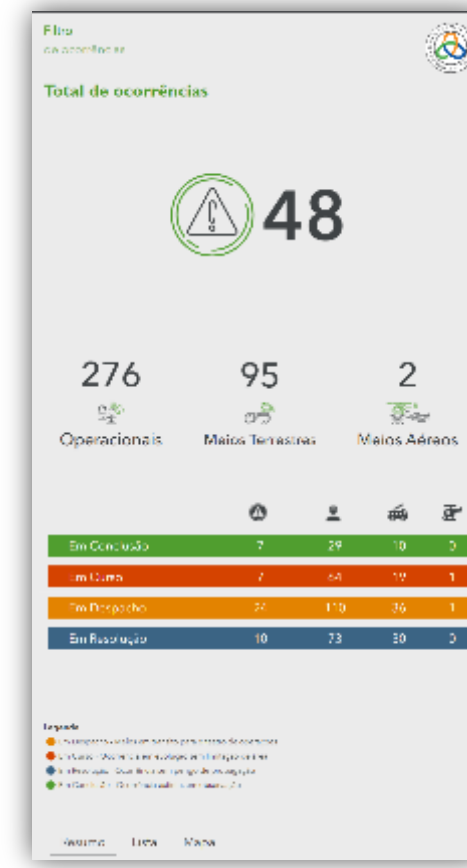
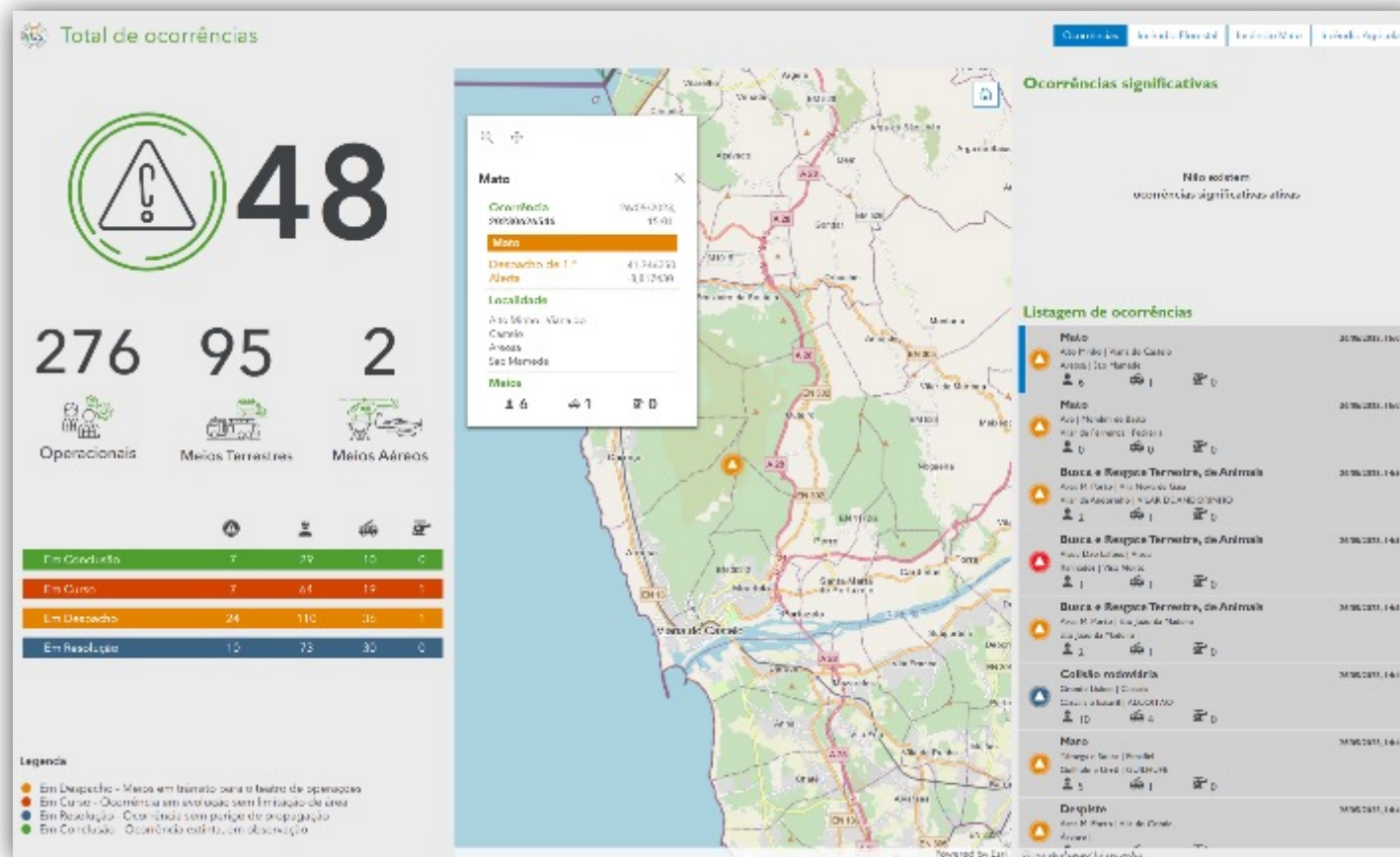
Filtros: Código Meio: Grupo: Sector: Sub-Sector: Classe: Estado: [Pesquisar]

Apresentar 10 registos por página

Cod. Meio	Categoria	Estado	Sub-Região	Concelho	Freguesia	Código Entidade	Entidade Detentora
0110 VFCI01	Veículo Florestal de Combate a Incêndios	Disponível	Região de Coimbra	Mealhada	Pampilhosa	FENIX25	FENIX25
01 (C+F)	Scooping Outros	Disponível	Alto Minho	Caminha	Caminha (Matriz) e Vilarelho	Scooping	Pontos de Scooping
0101 ABSC19	Ambulância de Socorro	Disponível	Região de Aveiro	Aveiro	Glória e Vera Cruz	FENIX25	FENIX25
0101 VFCI06	Veículo Florestal de Combate a Incêndios	Disponível	Região de Aveiro	Aveiro	Glória e Vera Cruz	FENIX25	FENIX25
0102 VALF04	Veículo de Apoio Logístico Especial - Pesado	Disponível	Região de Aveiro	Ílhavo	Ílhavo (São Salvador)	FENIX25	FENIX25
0104 VTSC01	Veículo Tanque Grande Capacidade	Disponível	Região de Aveiro	Ovar	Ovar, São João, Arada e São Vicente de Pereira Jusá	FENIX25	FENIX25
0105 VTTF03	Veículo Tanque Tático Florestal	Disponível	Area M. Porto	Oliveira de Azeméis	O. Azeméis, Riba-Ul, Ul, Machinhata Seixa, Madail	FENIX25	FENIX25
0106 VCOT01	Veículo de Comando Tático	Disponível	Região de Aveiro	Aveiro	Glória e Vera Cruz	FENIX25	FENIX25
0106 VTTF01	Veículo Tanque Tático Florestal	Disponível	Região de Aveiro	Aveiro	Glória e Vera Cruz	FENIX25	FENIX25
0108 VTTU03	Veículo Tanque Tático Urbano	Disponível	Região de Aveiro	Estarreja	Beduído e Veiros	FENIX25	FENIX25

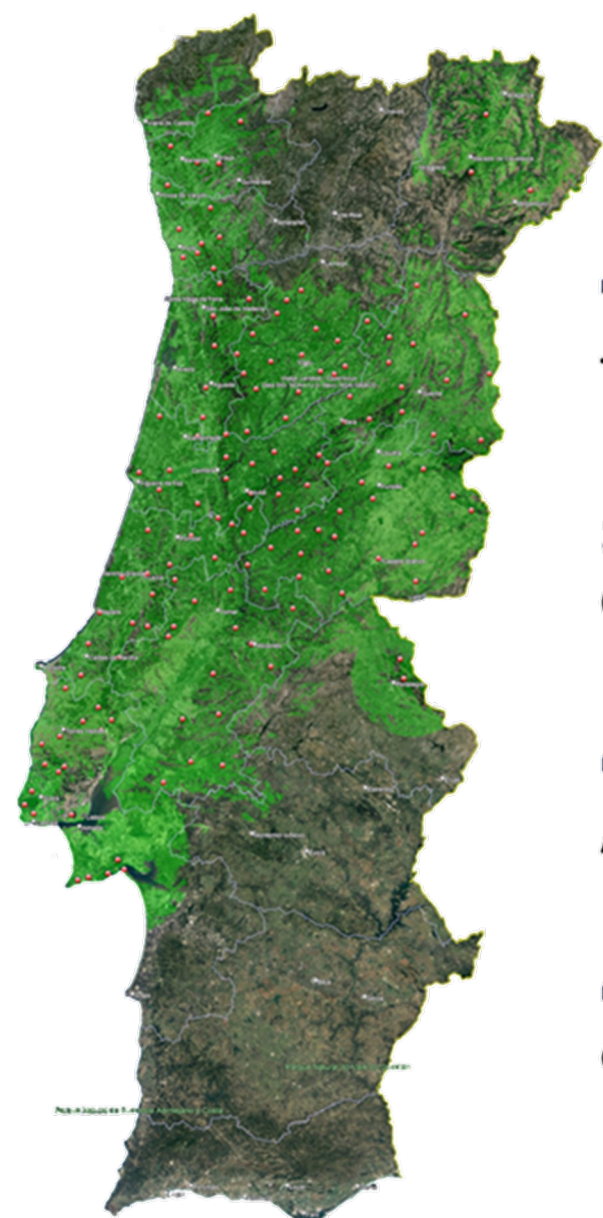
Registos encontrados: 46,304

Exportar CSV Importar CSV



<https://prociv.gov.pt>

Video Vigilance System



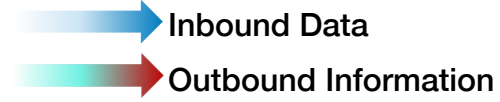
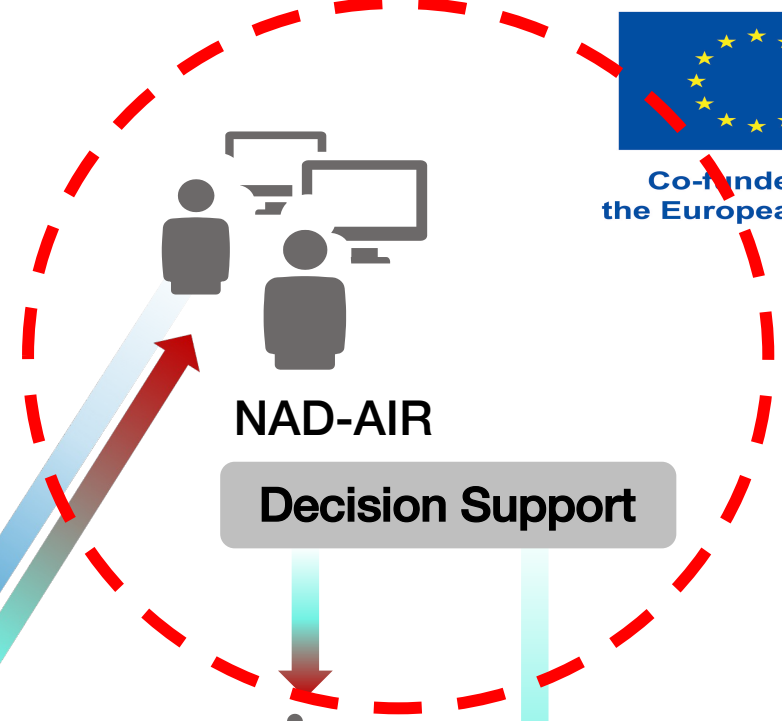
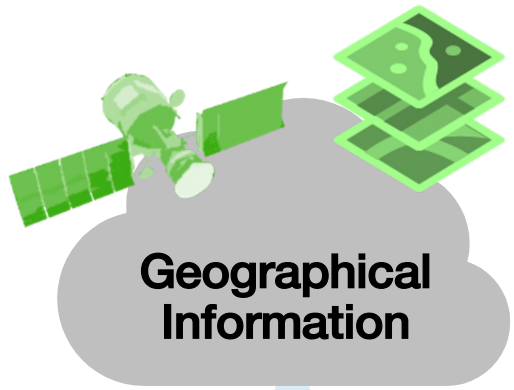
146
Torres de Acompanhamento Remoto

50
Centros de Gestão e Controlo

4.000.000 ha
Área Coberta

45%
do Território Nacional Continental





APP Ecosystem

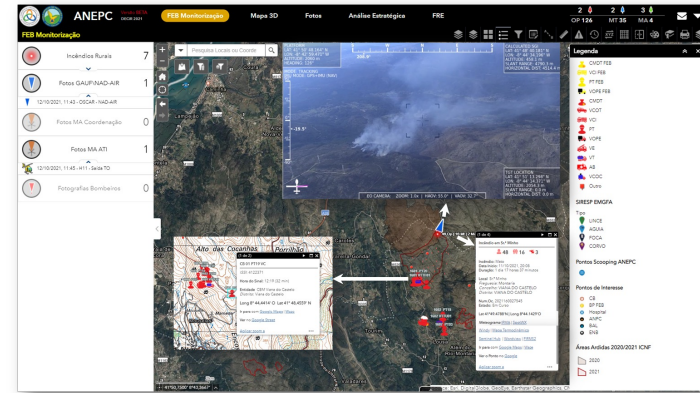
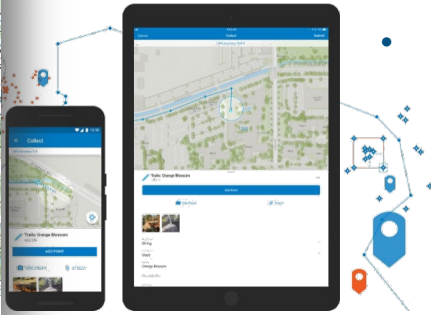


Co-funded by the European Union



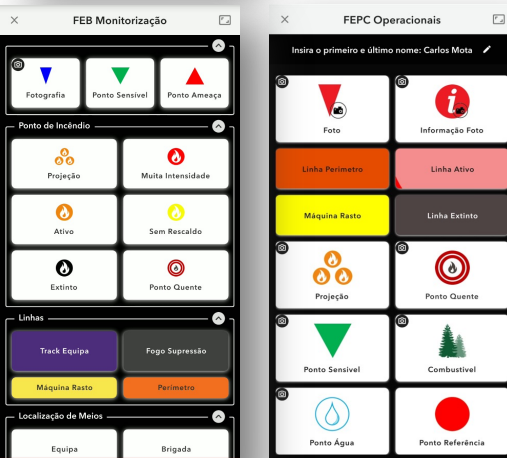
Field Maps

- Collection
- Visualization
- Offline Maps



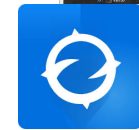
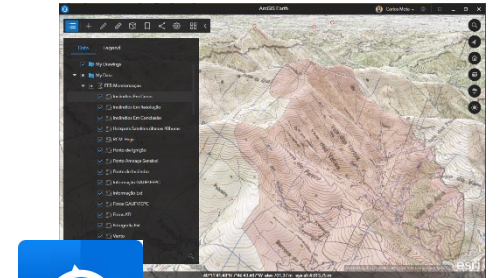
Web GIS

- Browser based
- Analysis
- Filters



Quickcapture

- On the go Image capture

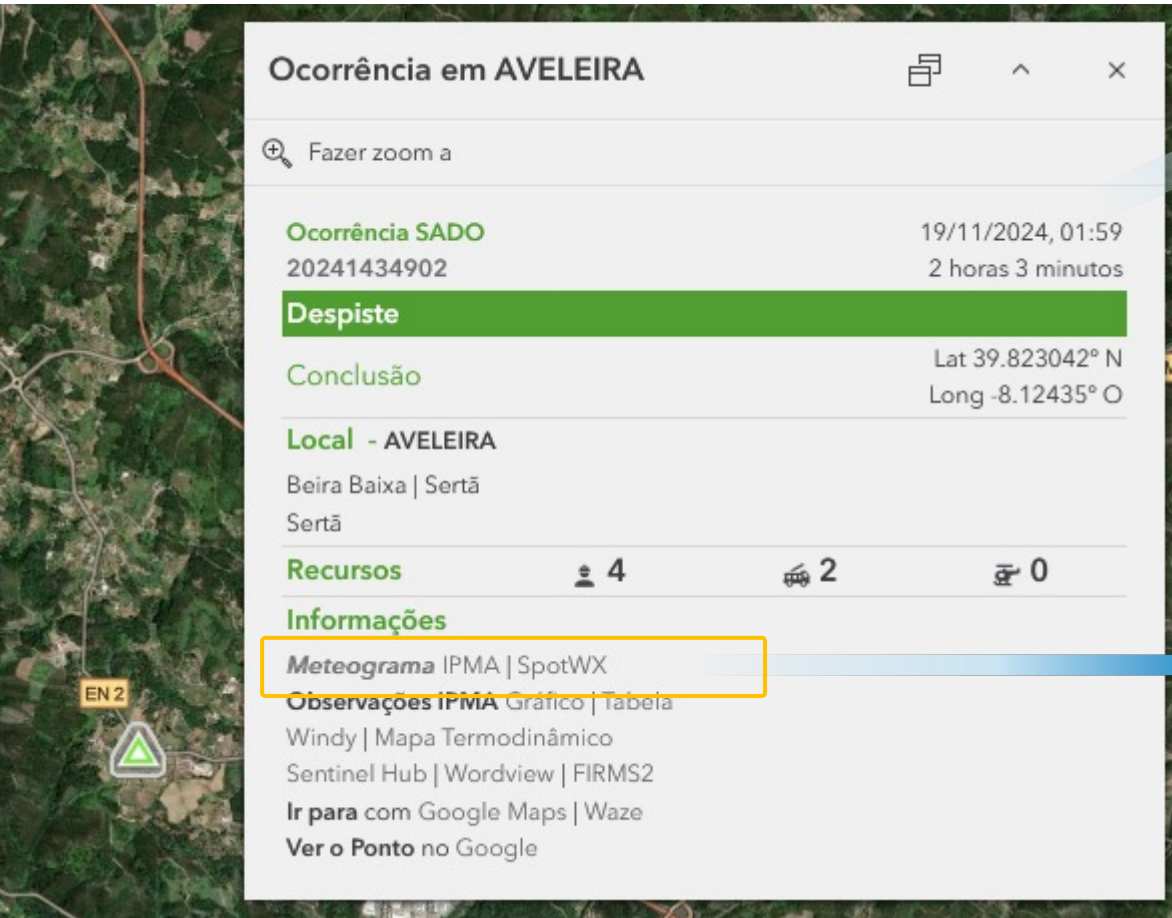


ArcGIS Earth

- 3D
- Special visualization

FEB Monitorização

SADO data: Status; Location; Ressources dispatched



Ocorrência em AVELEIRA

Fazer zoom a

Ocorrência SADO 19/11/2024, 01:59
20241434902 2 horas 3 minutos

Despiste

Conclusão Lat 39.823042° N
Long -8.12435° O

Local - AVELEIRA
Beira Baixa | Sertã
Sertã

Recursos 4 2 0

Informações

Meteograma IPMA | SpotWX

Observações IPMA Gráfico | Tabela

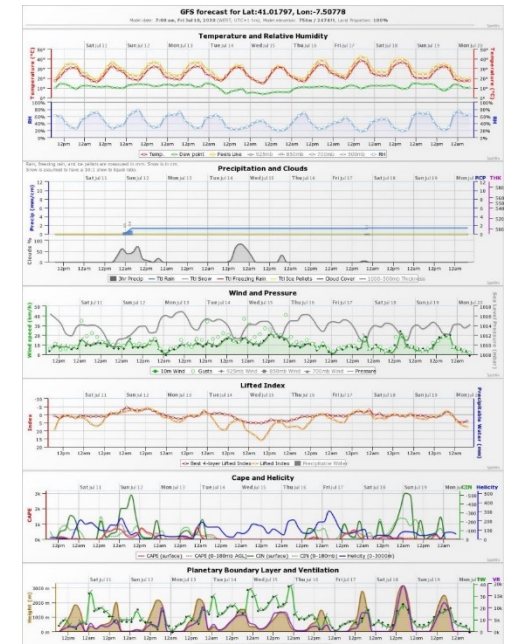
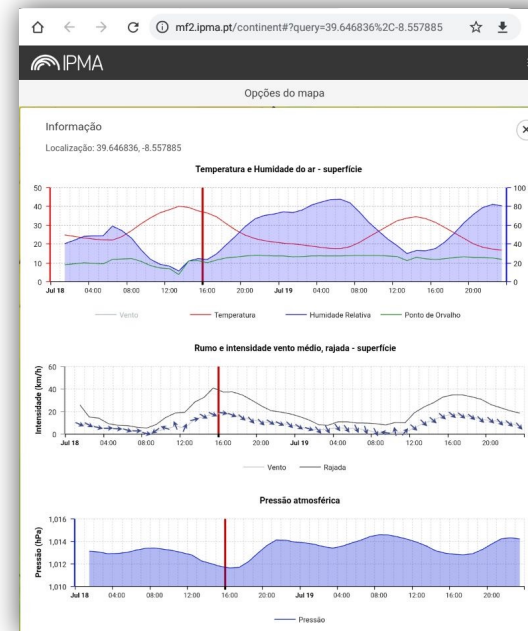
Windy | Mapa Termodinâmico

Sentinel Hub | Wordview | FIRMS2

Ir para com Google Maps | Waze

Ver o Ponto no Google

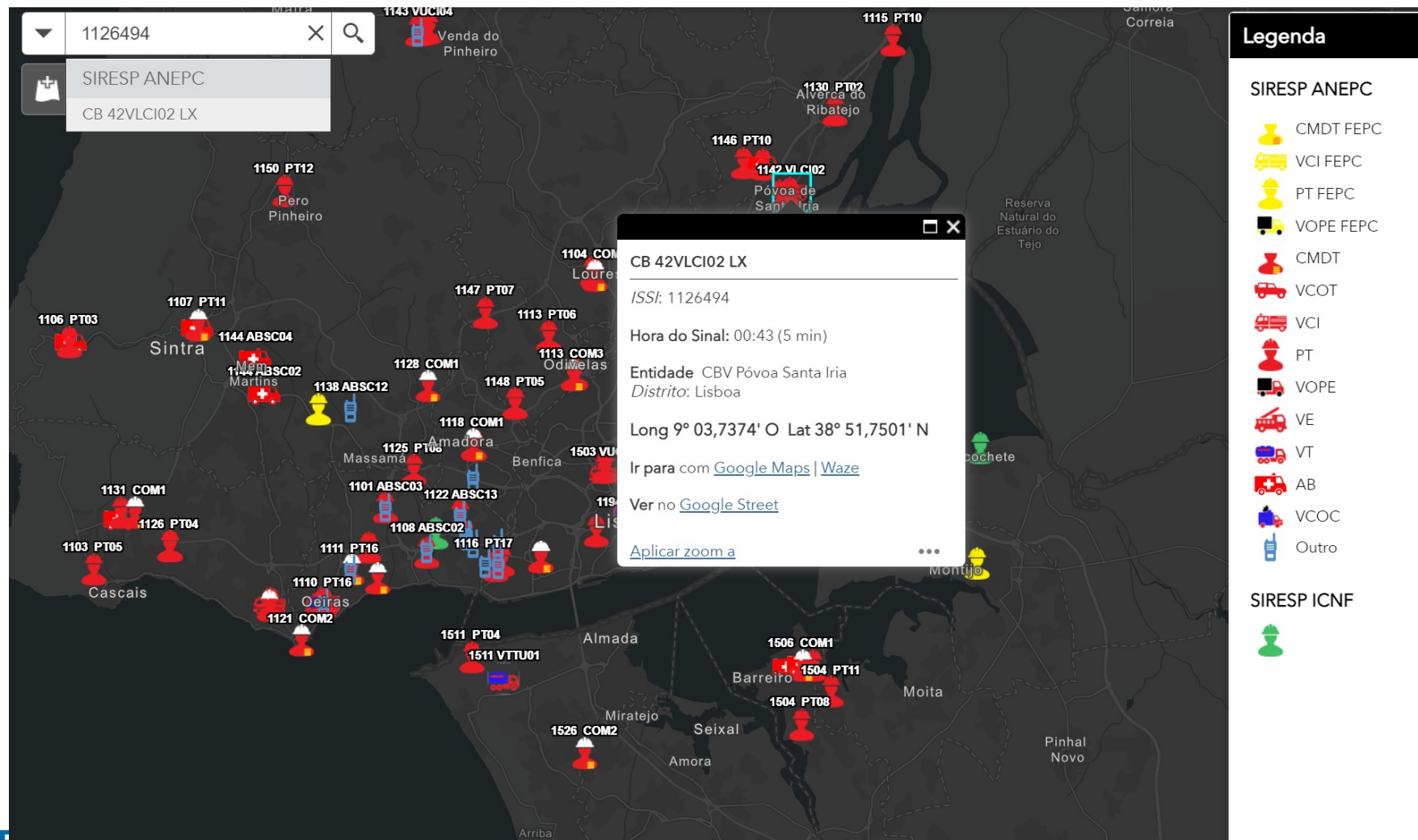
Local Weather Forecast



Arome ECMWF

GFS

Assets geolocation



The screenshot displays a map interface with a search bar at the top left containing the ID '1126494'. Below the search bar, a dropdown menu shows 'SIRESP ANEPC' and 'CB 42VLCI02 LX'. The map is populated with numerous colored icons representing different types of emergency assets, such as fire trucks, ambulances, and police vehicles, scattered across a geographical area including Sintra, Oeiras, and Almada. A detailed popup window for 'CB 42VLCI02 LX' is open, providing the following information:

- ISSI: 1126494
- Hora do Sinal: 00:43 (5 min)
- Entidade: CBV Póvoa Santa Iria
- Distrito: Lisboa
- Long 9° 03,7374' O Lat 38° 51,7501' N
- Links: [Ir para com Google Maps | Waze](#)
- Link: [Ver no Google Street](#)
- Button: [Aplicar zoom a](#)

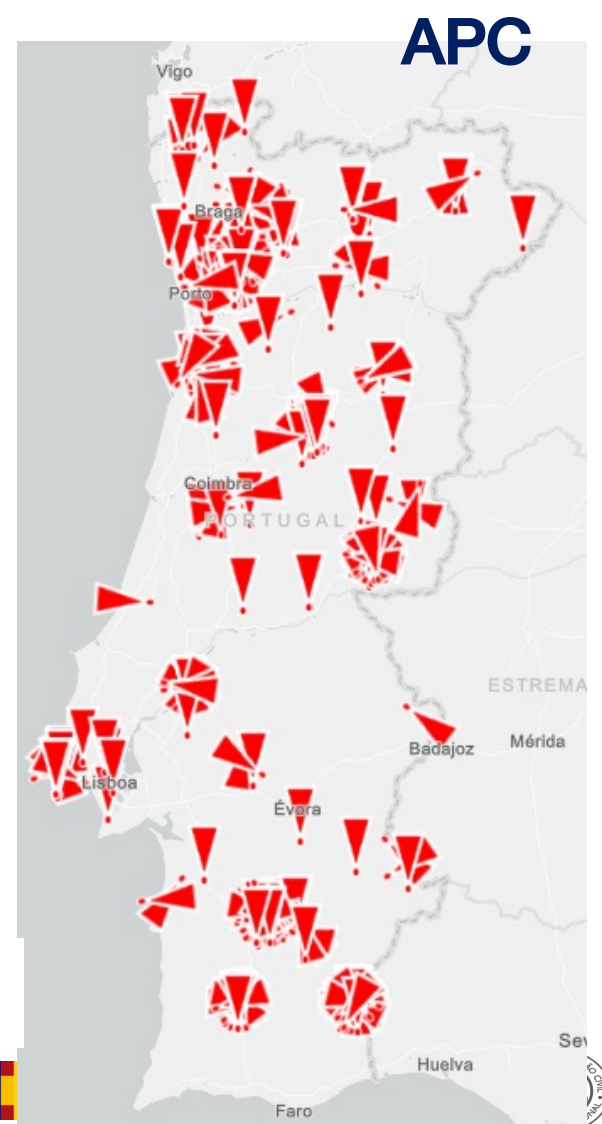
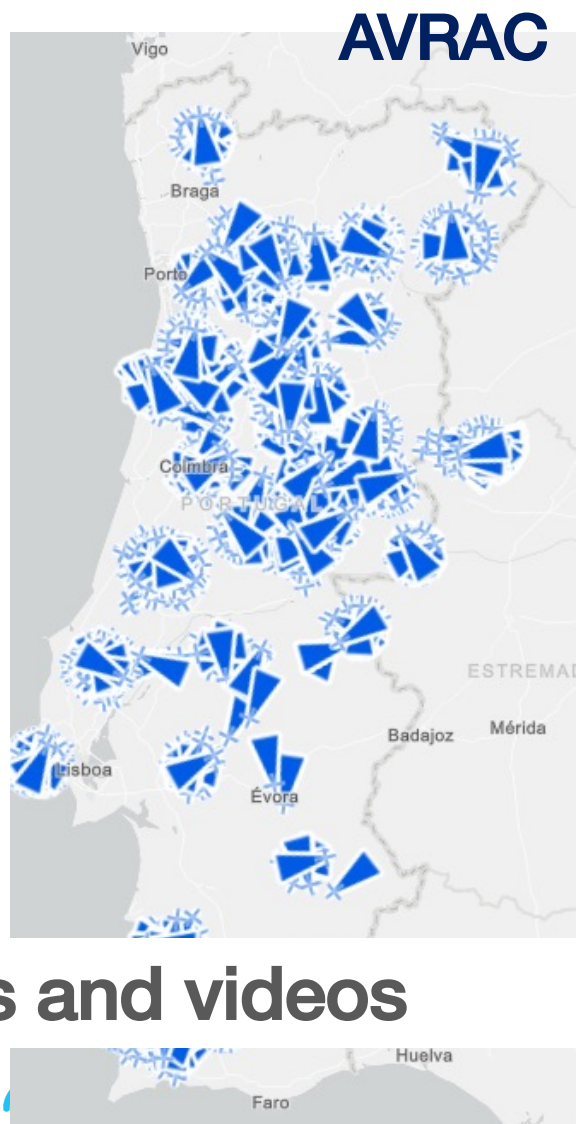
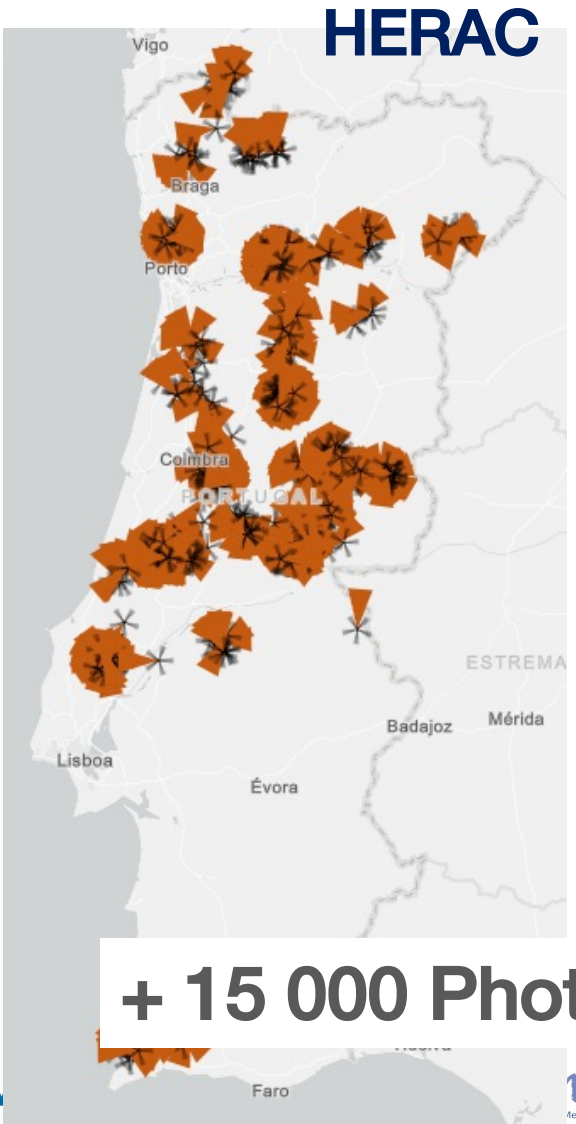
On the right side, a 'Legenda' (Legend) section is visible, divided into two categories:

- SIRESP ANEPC:**
 - CMDT FEPC (Yellow person icon)
 - VCI FEPC (Yellow truck icon)
 - PT FEPC (Yellow fire helmet icon)
 - VOPE FEPC (Black truck icon)
 - CMDT (Red person icon)
 - VCOT (Red car icon)
 - VCI (Red truck icon)
 - PT (Red fire helmet icon)
 - VOPE (Black truck icon)
 - VE (Red truck icon)
 - VT (Blue truck icon)
 - AB (Red ambulance icon)
 - VCOC (Blue person icon)
 - Outro (Blue person icon)
- SIRESP ICNF:**
 - (Green person icon)

FEB Monitorização



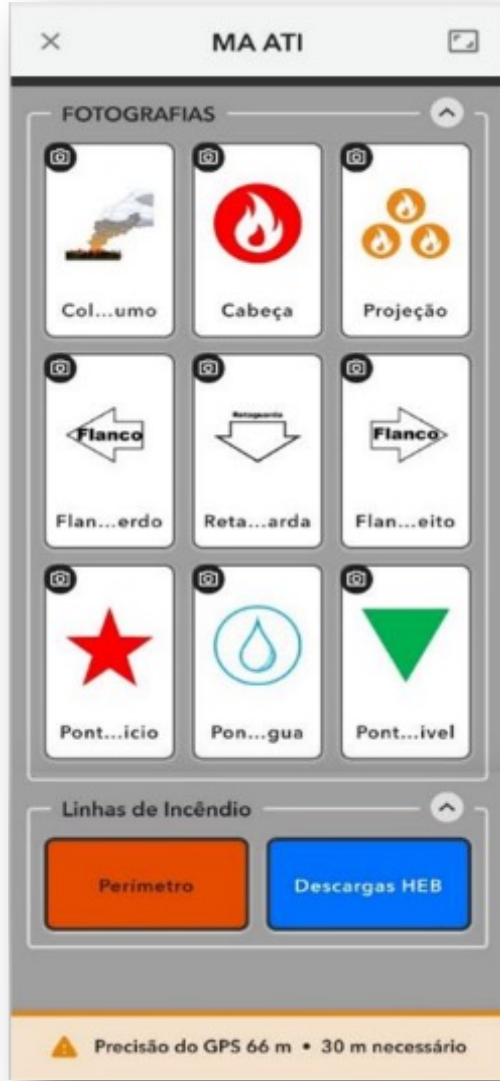
Co-funded by
the European Union



+ 15 000 Photos and videos



QuickCapture



HB ATI



HERAC



AVRAC



Mobile Phone

- Photo
- Video
- Track



Mobile Phone

- Photo
- Video

Gimbal

- Streaming
- Photo
- Vídeo

Multiespectral

- Sensor

Helitack Crew

Air Coordinator

Analyst

FEB Monitorização



Real time Streaming



FEB Monitorização



Co-funded by the European Union



Oscar02 2023/08/06 | 10:54:27 UTC+1

Lat: 37.441647
Lon: -8.705289
Tilt: -6°
Heading: 271°
Altitude: 937m

Oscar02
Lat: 37.44223
Lon: -8.705256
Tilt: -6°
Heading: 269°
Altitude: 935m

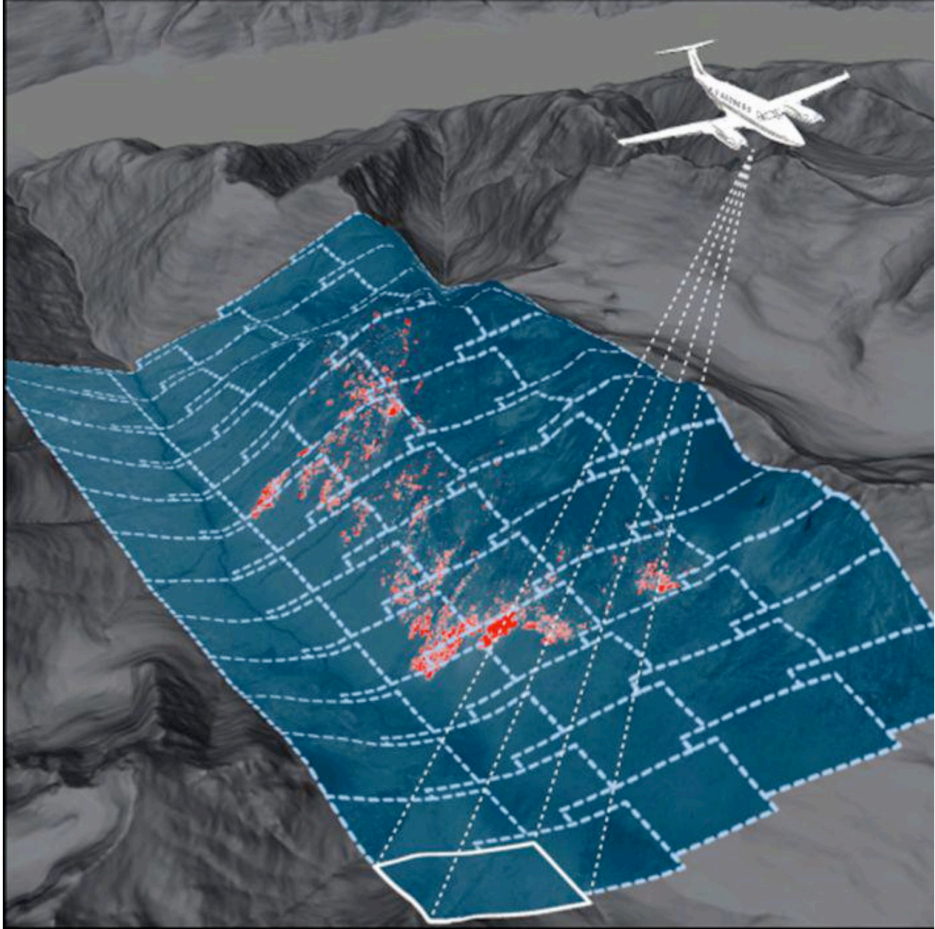
10:54:26 UTC+1

Target
Lat: 37.441696
Lon: -8.705286
Dist: 0m

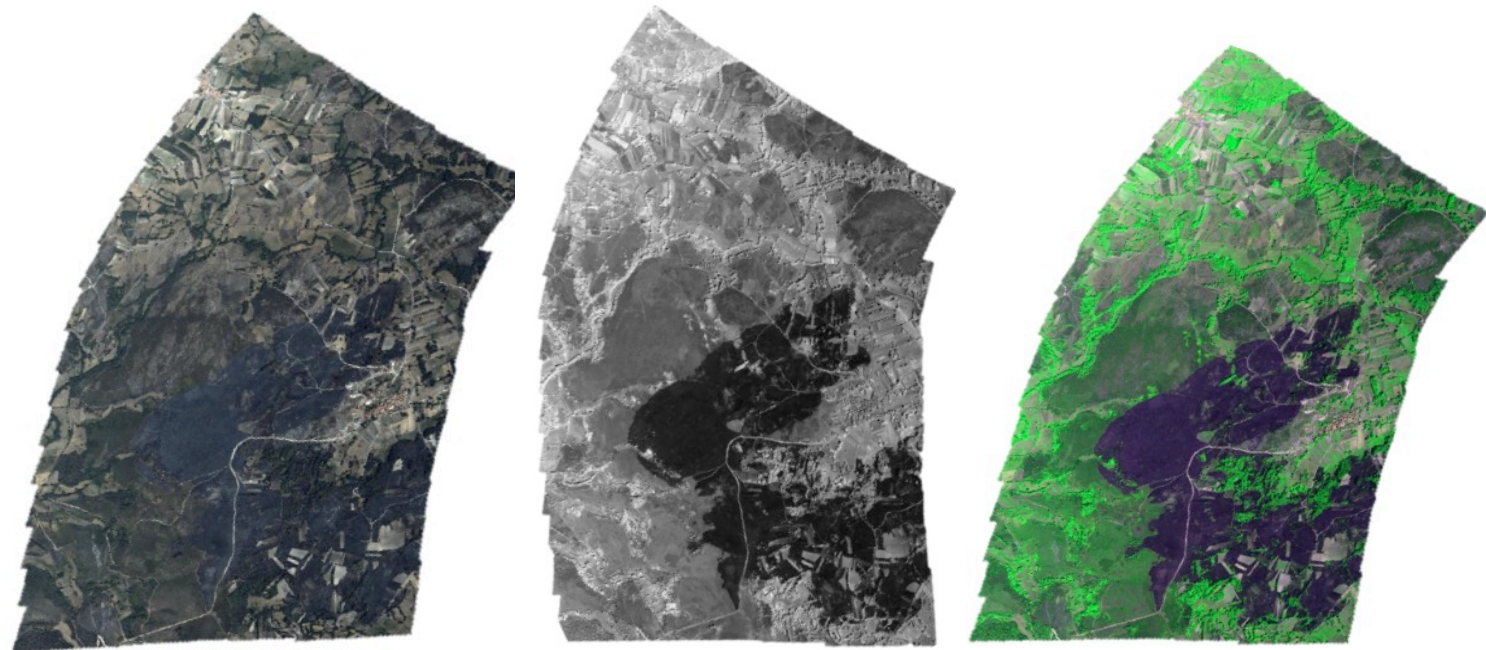
IR Zoom: 1.0x | HFOV: 18.0° | VFOV: 10.1°

Target
Lat: 37.442278
Lon: -8.705254
Dist: 0m

EO Zoom: 2.6x | HFOV: 22.7° | VFOV: 12.9°



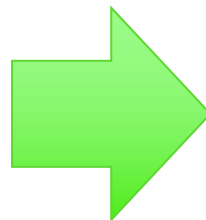
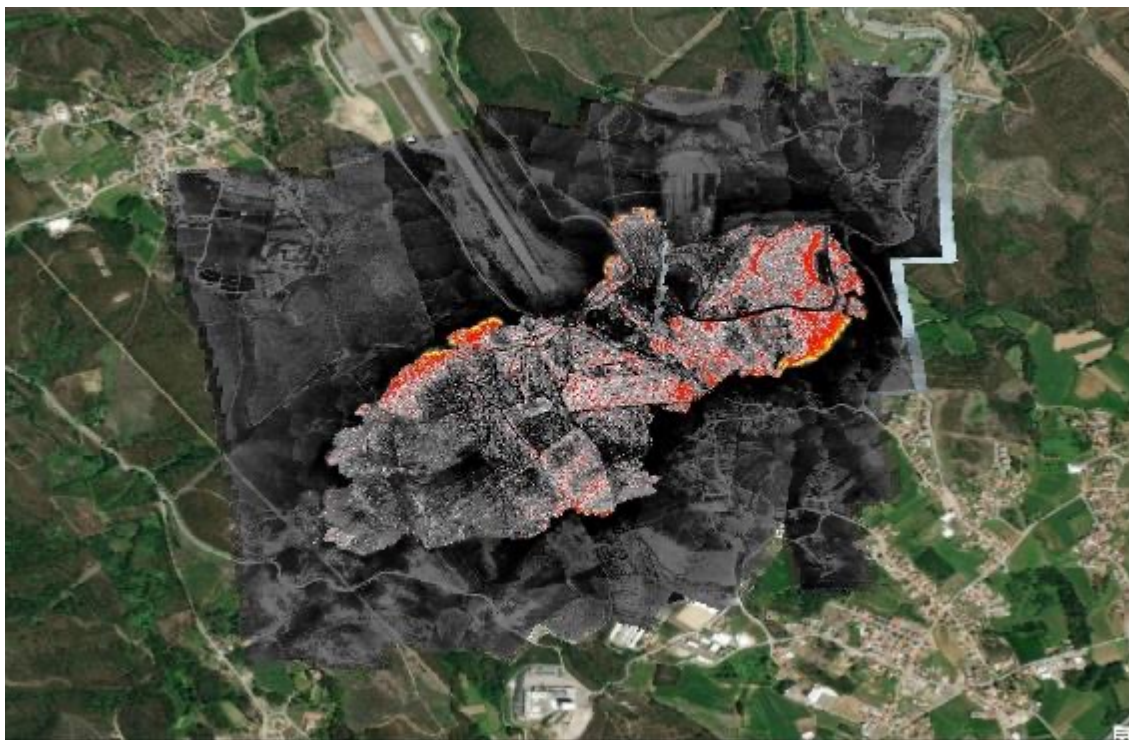
Multispectral sensor Surface map in real time



RGB

Camada N

RGBN



Active fire detection

Burned area definition





Co-funded by the European Union

Thank You for your attention